



Erasmus+

DECEMBER 16-20 2025

Blended Intensive Programme BIP - international workshop

Academy of Arts and Design - Wrocław

La Cambre - Bruxelles

School of Media Arts and Design - Porto

ESAD - Orléans



ASP WROCLAW

P.PORTO

ESCOLA
SUPERIOR
DE MEDIA
ARTES
E DESIGN



La Cambre

esad_orleans

DECEMBER 16-20 2025

Blended Intensive Programme BIP - international workshop

Academy of Arts and Design - Wrocław · La Cambre - Bruxelles · School of Media Arts and Design - Porto · ESAD - Orléans

Ksenia OSIPENKO / La Cambre - Bruxelles

Alicja PODWIKA / Academy of Arts and Design - Wrocław

Théo FACON, Isaline LEBOUT, Alice ZANUTTI / ESAD - Orléans

DECEMBER 16-20 2025

Blended Intensive Programme BIP - international workshop

Academy of Arts and Design - Wrocław

La Cambre - Bruxelles

School of Media Arts and Design - Porto

ESAD - Orléans

The workshop aims to explore the concepts of data-sculpture and data-drawing as a way to investigate data not only as information, but also as a material for artistic and collective creation. By combining traditional crafts such as drawing and sculpture with computational tools like data visualization, parametric modeling, and digital fabrication, participants will discover how new shapes and ideas emerge at the intersection of human gestures and machine processes. The objectives are to develop a critical and poetic approach to data, to experiment with hybrid processes of co-creation between humans and machines, and to foster intercultural collaboration leading to the production of a collective artwork that reflects the sensibilities of the four participating countries.

Blended Intensive Programme BIP - international workshop

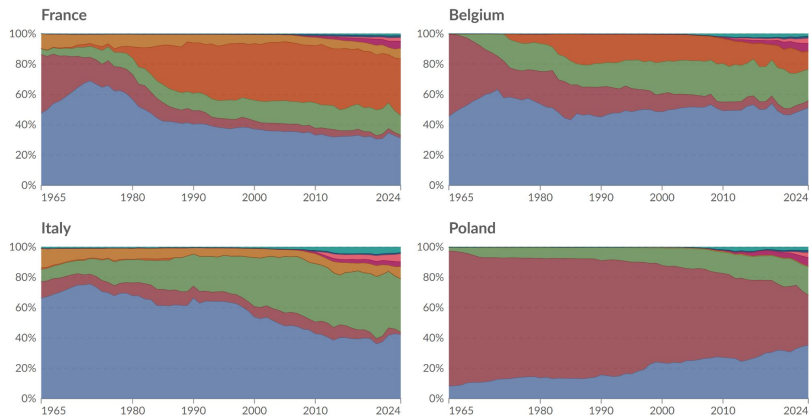
Academy of Arts and Design - Wrocław · La Cambre - Bruxelles · School of Media Arts and Design - Porto · ESAD - Orléans

Energy consumption by source

Measured in terms of primary energy using the substitution method.

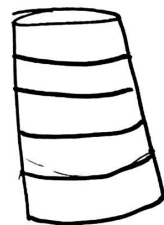


Oil Coal Gas Nuclear Hydropower Wind Solar Biofuels Other renewables



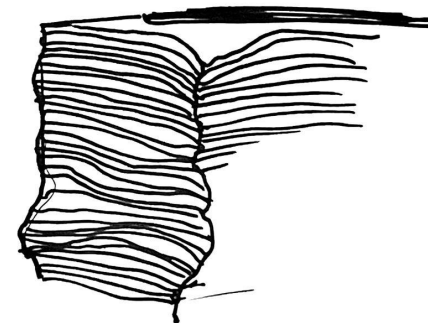
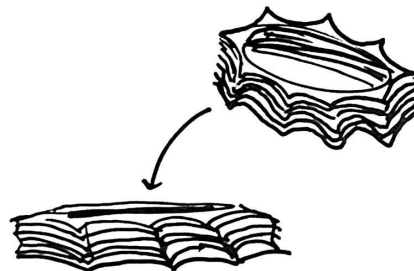
Data source: Energy Institute - Statistical Review of World Energy (2025)
 Note: "Other renewables" include geothermal, biomass, and waste energy.

OurWorldinData.org/energy | CC BY



*from higher consumption
to lower consumption
x country*

BECOMES ONE



A SERIES OF OBJECT THAT SHOW SOURCES OF ENERGY CONSUMPTION IN EACH OF OUR COUNTRIES

Blended Intensive Programme BIP - international workshop

Academy of Arts and Design - Wrocław · La Cambre - Bruxelles · School of Media Arts and Design - Porto · ESAD - Orléans



DECEMBER 16-20 2025

Blended Intensive Programme BIP - international workshop

Academy of Arts and Design - Wrocław · La Cambre - Bruxelles · School of Media Arts and Design - Porto · ESAD - Orléans



**WHERE ARE OUR COUNTRIES IMPORTING THEIR ENERGY
RESOURCES FROM? - ILLUSTRATION**

electricity

Blended Intensive Programme BIP - international workshop

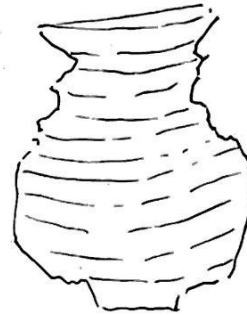
Academy of Arts and Design - Wrocław · La Cambre - Bruxelles · School of Media Arts and Design - Porto · ESAD - Orléans

share of electricity production

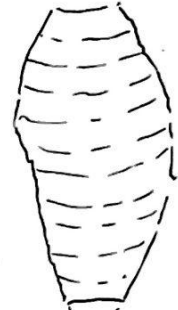


INSTALLATION IDEA DRAFT

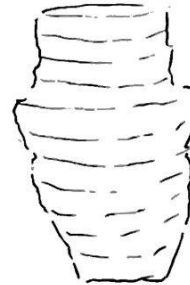
total production of electricity



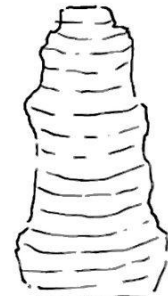
*France
nuclear*



*Belgium
nuclear*



*Italy
gas*

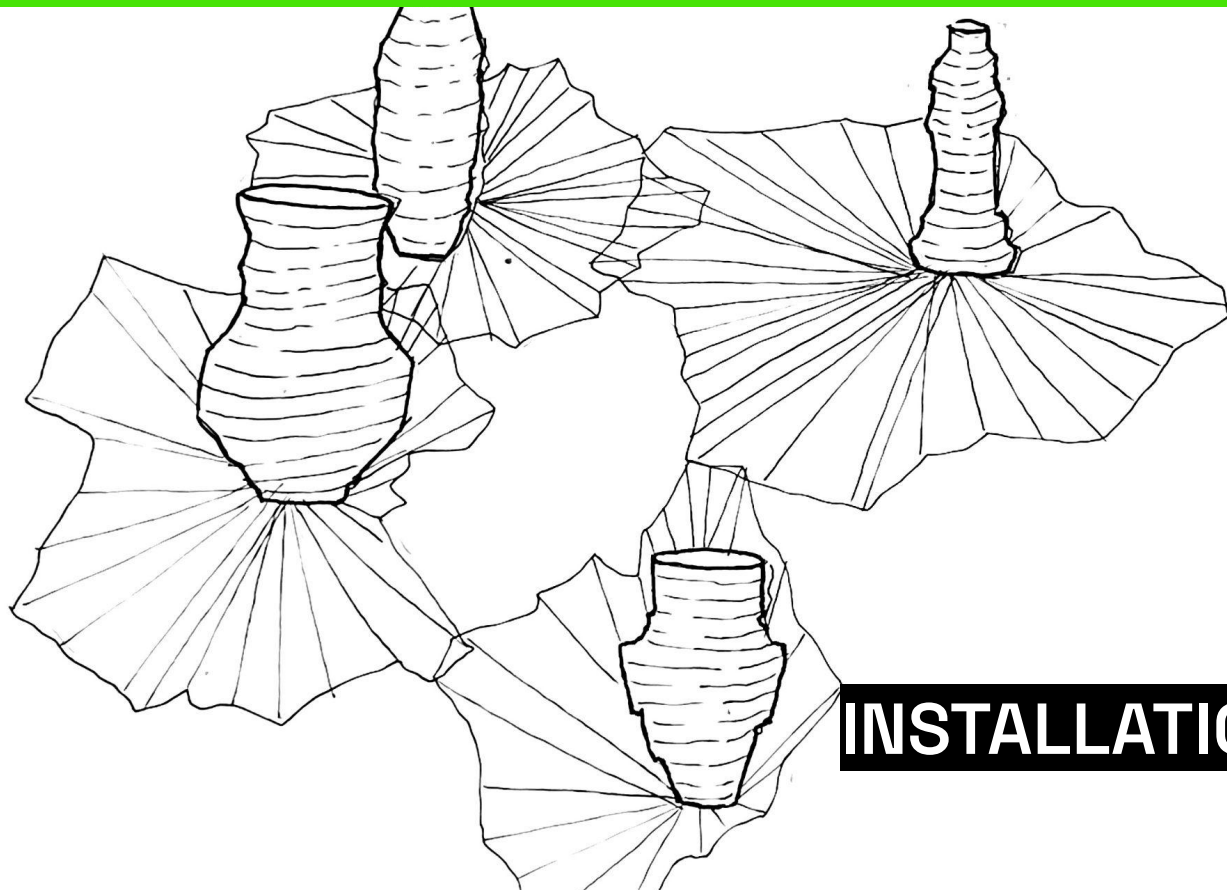


Poland

DECEMBER 16-20 2025

Blended Intensive Programme BIP - international workshop

Academy of Arts and Design - Wrocław · La Cambre - Bruxelles · School of Media Arts and Design - Porto · ESAD - Orléans

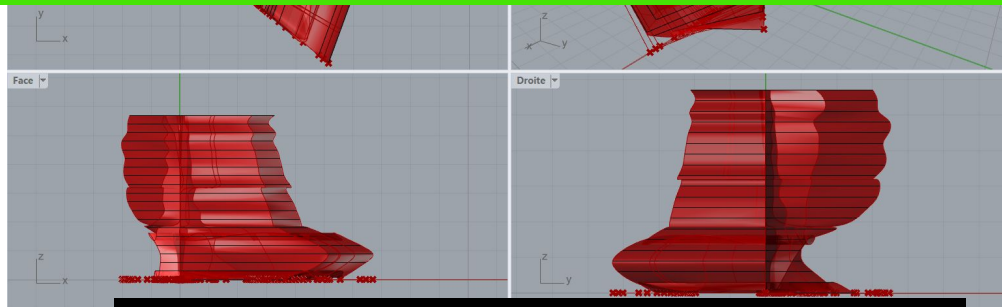


INSTALLATION IDEA DRAFT

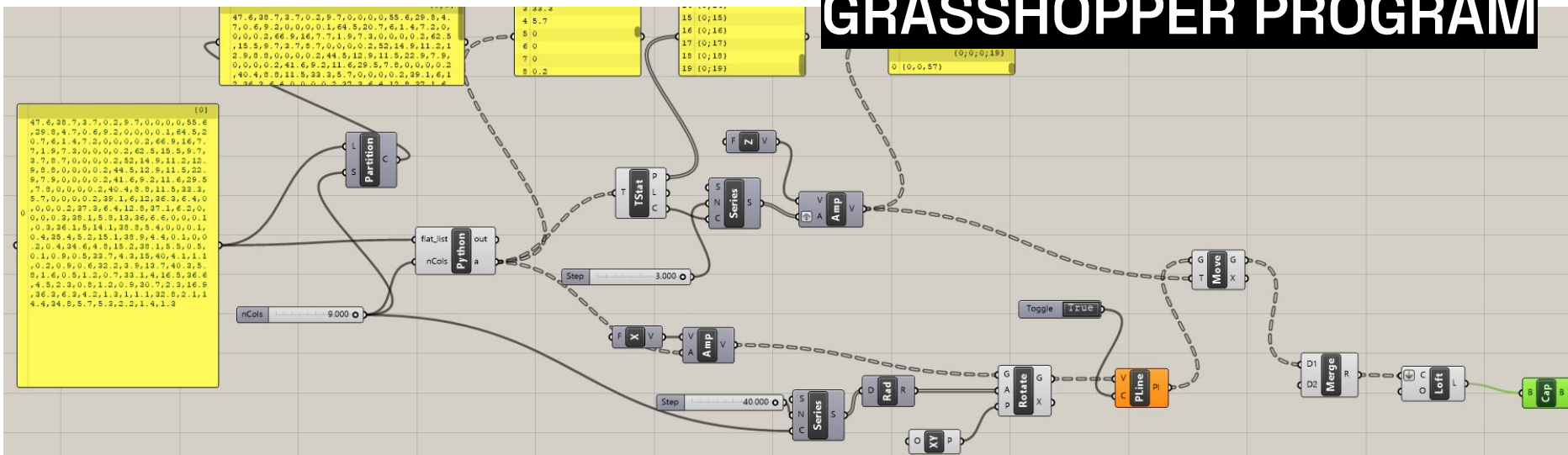
Blended Intensive Programme BIP - international workshop

Academy of Arts and Design - Wrocław · La Cambre - Bruxelles · School of Media Arts and Design - Porto · ESAD - Orléans

Grasshopper program collect data from a list to make vectorial section then make a shape based on this curve

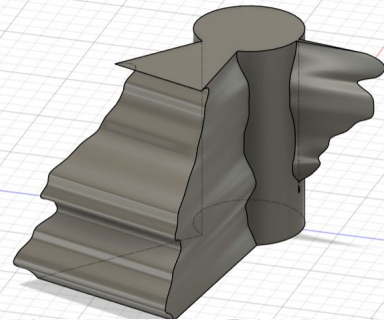
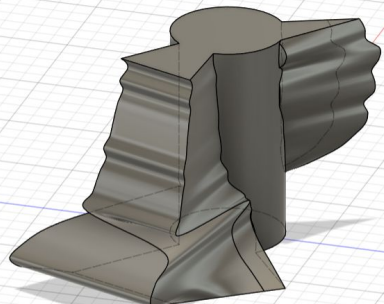
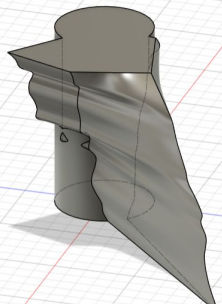
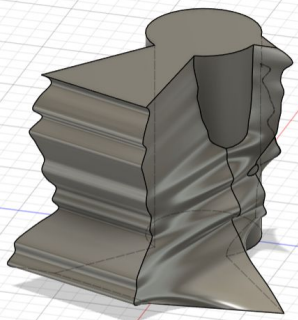


GRASSHOPPER PROGRAM

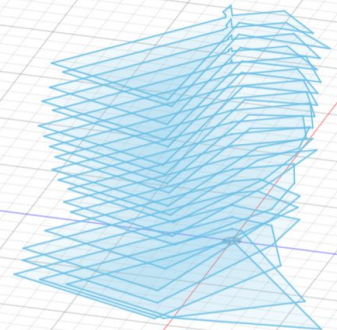
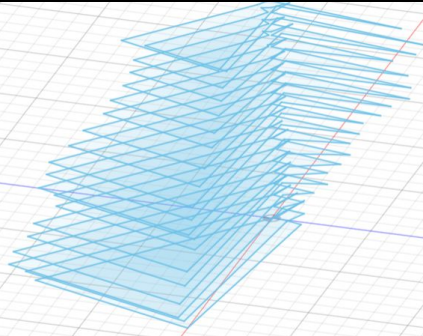
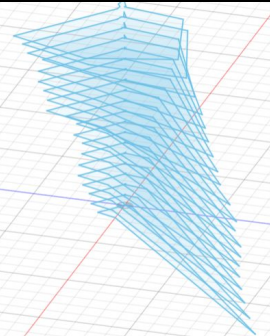
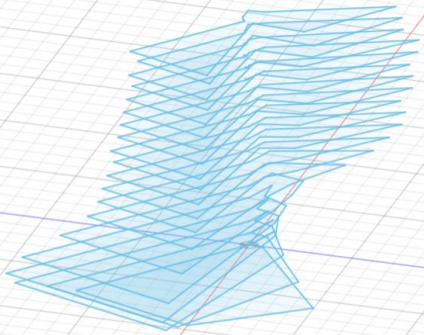


Blended Intensive Programme BIP - international workshop

Academy of Arts and Design - Wrocław · La Cambre - Bruxelles · School of Media Arts and Design - Porto · ESAD - Orléans



RENDER OF EACH COUNTRY



Poland

Italy

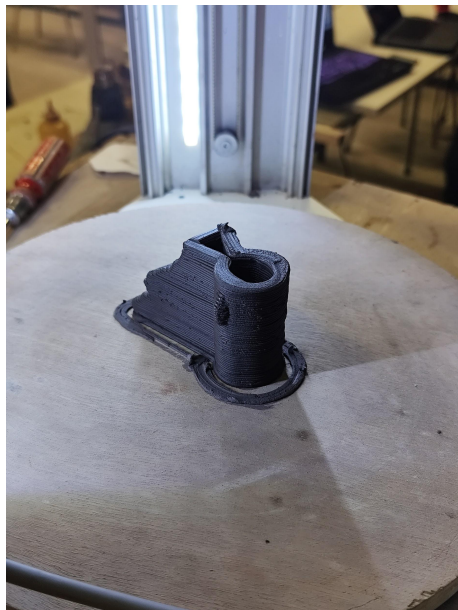
France

Belgium

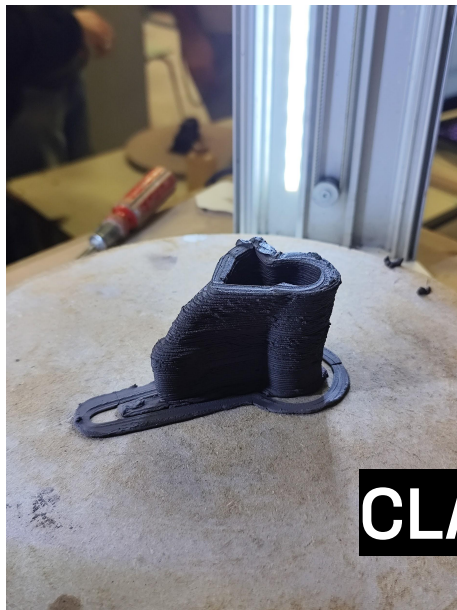
DECEMBER 16-20 2025

Blended Intensive Programme BIP - international workshop

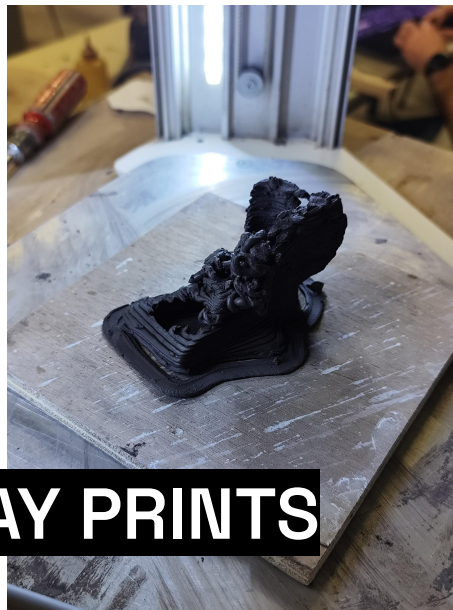
Academy of Arts and Design - Wrocław · La Cambre - Bruxelles · School of Media Arts and Design - Porto · ESAD - Orléans



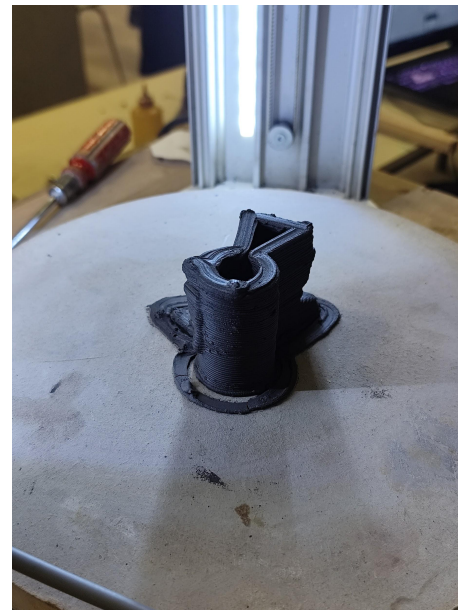
Poland



Italy



France



Belgium

CLAY PRINTS

DECEMBER 16-20 2025

Blended Intensive Programme BIP - international workshop

Academy of Arts and Design - Wrocław · La Cambre - Bruxelles · School of Media Arts and Design - Porto · ESAD - Orléans

Lilas / La Cambre - Bruxelles

Wojciech / Academy of Arts and Design - Wrocław

Gabriel / School of Media Arts and Design - Porto

Simon - Léa - Sacha / ESAD - Orléans

DECEMBER 16-20 2025

Blended Intensive Programme BIP - international workshop

Academy of Arts and Design - Wrocław · La Cambre - Bruxelles · School of Media Arts and Design - Porto · ESAD - Orléans

16.12.2025

Pattern experiments

DATE: DECEMBER 2025
AI Lying

Photographs of mining sites with Google Satellite.

- (a) Carajas iron ore mine in Brazil
- (b) Batu Hijau copper-gold mine in Indonesia
- (c) Super Pit gold mine in Australia.

SVG generations send to the 2D Axes machine



DECEMBER 16-20 2025

Blended Intensive Programme BIP - international workshop

Academy of Arts and Design - Wrocław · La Cambre - Bruxelles · School of Media Arts and Design - Porto · ESAD - Orléans



Mining site of lithium, Allier, France

© Anne-Flore Souchon / FTV



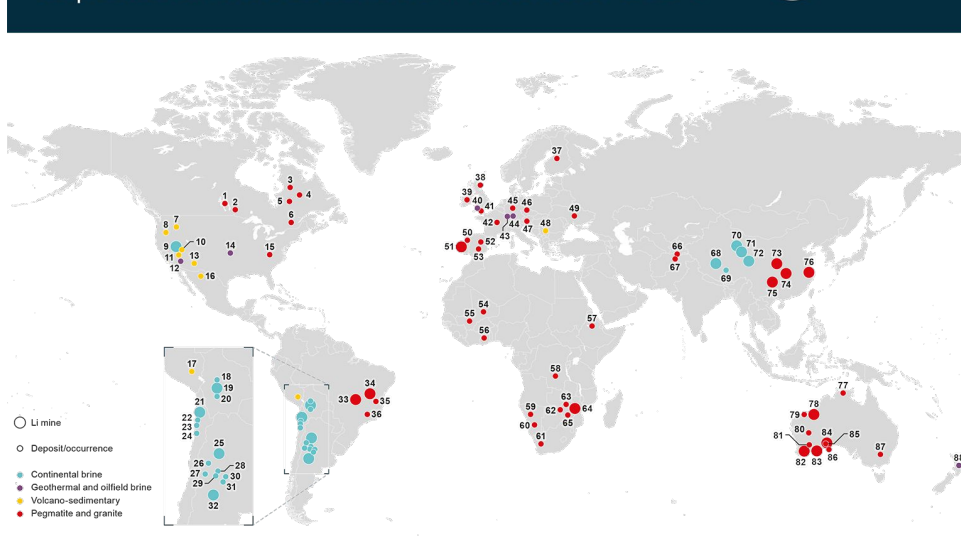
Lithium conversion plant, Allier, France

© OLIVIER CORSAN / MAXPPP

Blended Intensive Programme BIP - international workshop

Academy of Arts and Design - Wrocław · La Cambre - Bruxelles · School of Media Arts and Design - Porto · ESAD - Orléans

Global lithium (Li) mines, deposits and occurrences (November 2021)



- 1 Tanco, Canada
- 2 Separation Rapids, Canada
- 3 James Bay, Canada
- 4 Rose, Canada
- 5 Whabouchi, Canada
- 6 Val-d'Or, Canada
- 7 McDermitt, USA
- 8 Kings Valley, USA
- 9 Silver Peak, USA
- 10 Bonnie Claire, USA
- 11 Boron, USA
- 12 Salton Sea, USA
- 13 Clayton North, USA
- 14 Magnolia, USA
- 15 Kings Mountain, USA
- 16 Sonora, Mexico
- 17 Falchani, Peru
- 18 Salar de Coipasa, Bolivia
- 19 Salar de Uyuni, Bolivia
- 20 Salar de Pastos Grandes, Bolivia
- 21 Salar de Atacama (2 operators), Chile
- 22 Salar de Aguilera, Chile
- 23 Salar de Pedernales, Chile
- 24 Salar de Maricunga, Chile
- 25 Salar de Garzo, Argentina
- 26 Salar de Caucharí (2 projects), Argentina
- 27 Salar del Rincón (3 projects), Argentina
- 28 Salar de Pozuelos, Argentina
- 29 Salar de Pastos Grandes, Argentina
- 30 Salar de Ralones, Argentina
- 31 Salar de Diablos, Argentina
- 32 Salar del Hombre Muerto (3 projects), Argentina
- 33 Mibra, Brazil
- 34 Mina da Cachoeira, Brazil
- 35 Jequitinhonha, Brazil
- 36 Volta Grande, Brazil
- 37 Lantta (and 5 others), Finland
- 38 Glenbuchat, United Kingdom
- 39 Aclare, Ireland
- 40 United Downs, United Kingdom
- 41 St Austell, United Kingdom
- 42 Chêdeville (and 4 others), France
- 43 Rittershoffen, France
- 44 Upper Rhine Valley, Germany

- 45 Zinnwald (and 4 others), Germany
- 46 Cinovec, Czech Republic
- 47 Wolfsberg, Austria
- 48 Jadar, Serbia
- 49 Polokhovskoe (and 2 others), Ukraine
- 50 Mina do Barroso (and 3 others), Portugal
- 51 Aljô, Portugal
- 52 Valdeffôrez/San José, Spain
- 53 Alberta I, Spain
- 54 Bougouni, Mali
- 55 Goulamina, Mali
- 56 Evoyaa, Ghana
- 57 Kenitsha, Ethiopia
- 58 Manono-Kitoto, Democratic Republic of Congo
- 59 Uis, Namibia
- 60 Karibib, Namibia
- 61 Orange River Area, South Africa
- 62 Kamativi, Zimbabwe
- 63 Zulu, Zimbabwe
- 64 Bikita, Zimbabwe
- 65 Arcadia, Zimbabwe
- 66 Farun area, Afghanistan
- 67 Nuristan area, Afghanistan
- 68 Zhabyue Salt Lake, China
- 69 Dangqionqiao, China
- 70 West Tajik Na'er, China
- 71 East Tajik Na'er, China
- 72 Qinghai Salt Lake, China
- 73 Sichuan Aha, China
- 74 Maerkang, China
- 75 Jajika, China
- 76 Ningda, China
- 77 Finnis, Australia
- 78 Pilgangoora, Australia
- 79 Wodgina, Australia
- 80 Kathleen Valley, Australia
- 81 Mount Holland, Australia
- 82 Greenbushes, Australia
- 83 Mount Cattlin, Australia
- 84 Mount Marion, Australia
- 85 Bald Hill, Australia
- 86 Bulidania, Australia
- 87 Narrabri, Australia
- 88 Ohaaki, New Zealand

How to cite: Shaw, R.A. (2021) Global lithium (Li) mines, deposits and occurrences (November 2021), British Geological Survey

Source
<https://lithiumfuture.org/map.html>

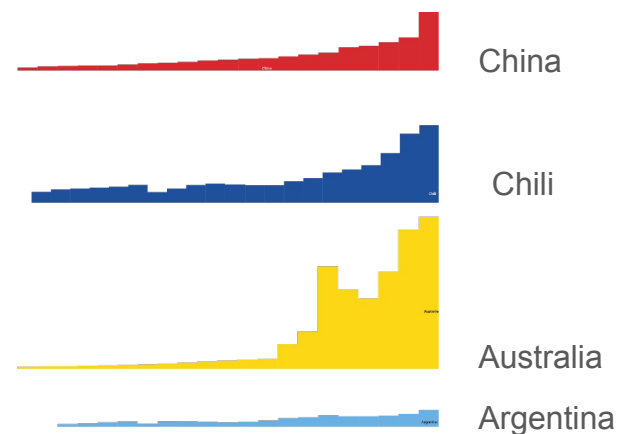
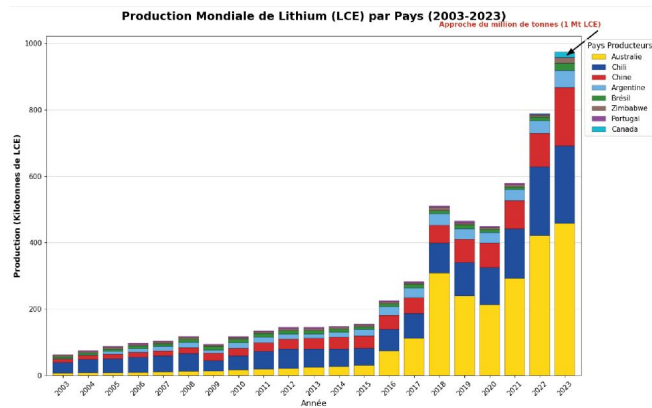
Getting more data on lithium mining sites

Blended Intensive Programme BIP - international workshop

Academy of Arts and Design - Wrocław · La Cambre - Bruxelles · School of Media Arts and Design - Porto · ESAD - Orléans

Test projection on 3D printer

It's about creating a profile using those graphs and transforming this profile into a vase



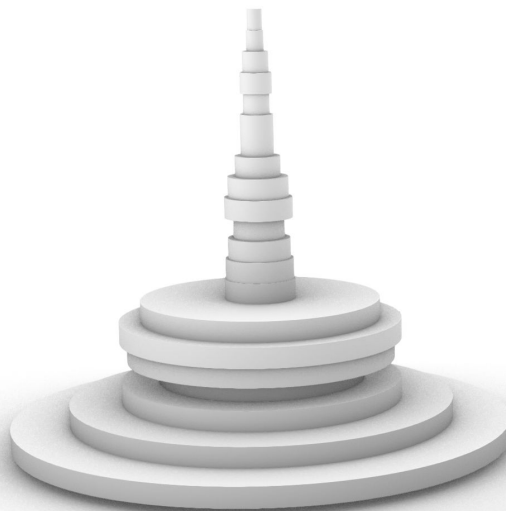
Pattern experiments

Blended Intensive Programme BIP - international workshop

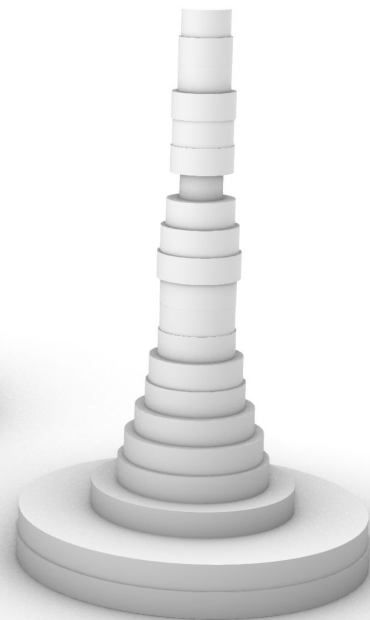
Academy of Arts and Design - Wrocław · La Cambre - Bruxelles · School of Media Arts and Design - Porto · ESAD - Orléans

Test projection on 3D printer
Datas from BRGM - WMD 2024

Australia's
profil datas



Chili's profil
datas

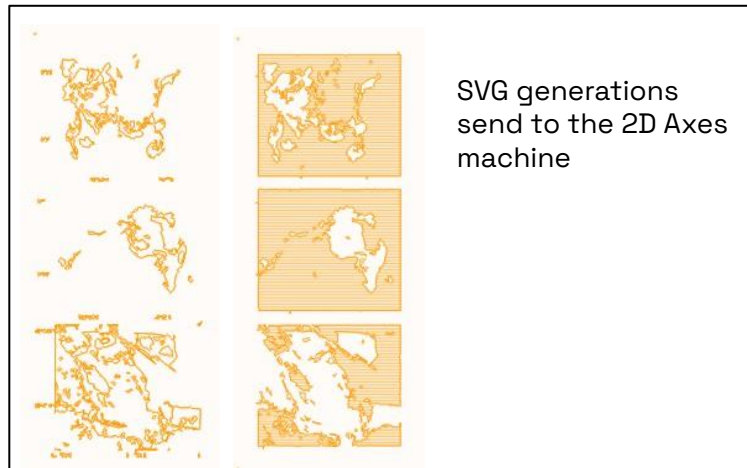


Blended Intensive Programme BIP - international workshop

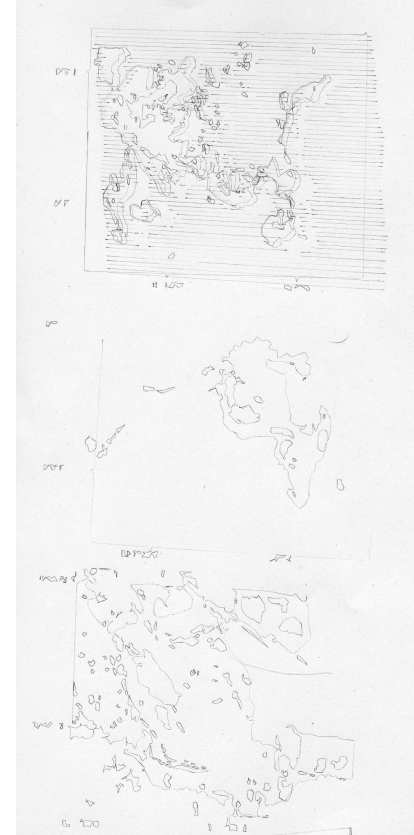
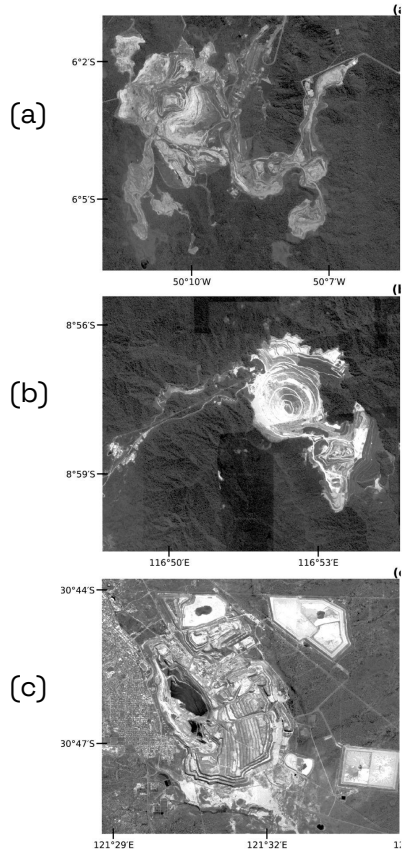
Academy of Arts and Design - Wrocław · La Cambre - Bruxelles · School of Media Arts and Design - Porto · ESAD - Orléans

Photographs of mining sites with Google Satellite.

- (a) Carajas iron ore mine in Brazil
- (b) Batu Hijau copper-gold mine in Indonesia
- (c) Super Pit gold mine in Australia

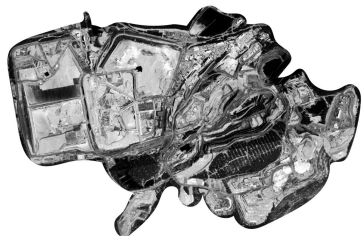


Pattern experiments

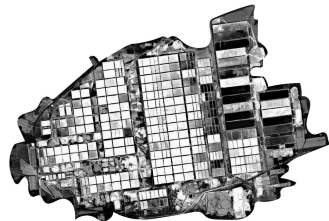


Blended Intensive Programme BIP - international workshop

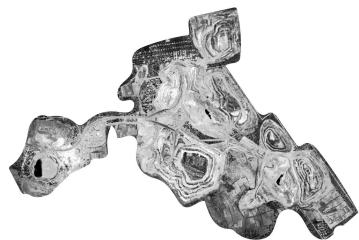
Academy of Arts and Design - Wrocław · La Cambre - Bruxelles · School of Media Arts and Design - Porto · ESAD - Orléans



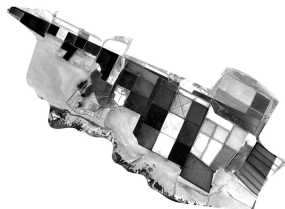
23°31'42.8"S 68°20'06.5"W
Greenbushes Lithium Operations -
Australia



(23°38'43.9"S 68°19'29.1"W
Salar de Atacama Mine - Chile



(31°04'51.3"S 121°26'08.2"E / Mount
Marion Lithium Project - Australia



36°43'09.6"N 95°32'37.3"E
Chaerhan Lake Mine - China

Research conducted with the objective to recover a view of the sky above the world's largest lithium mines. Then translating their physical footprint on the earth using a 2-axis machine.

The software itself, as AI, is generating a code from a picture and loses some of the authenticity of the mining sites.

Gleaning photographs of mine sites
through Google Earth

DECEMBER 16-20 2025

Blended Intensive Programme BIP - international workshop

Academy of Arts and Design - Wrocław · La Cambre - Bruxelles · School of Media Arts and Design - Porto · ESAD - Orléans



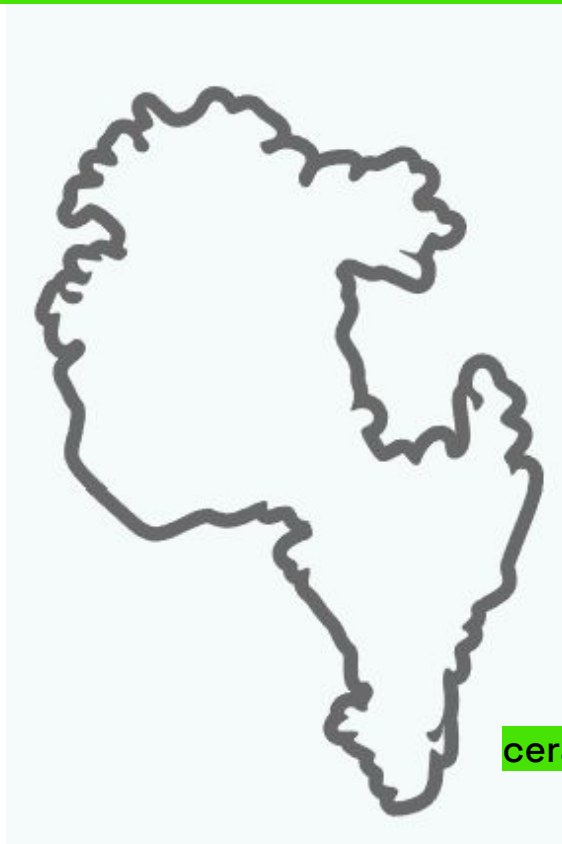
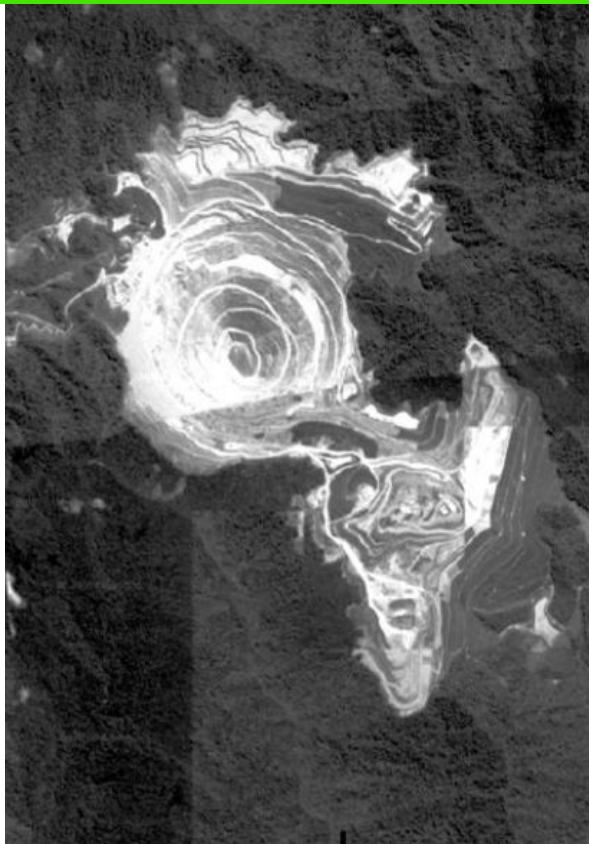
Scans of the results from the 2 Axis Machine



DECEMBER 16-20 2025

Blended Intensive Programme BIP - international workshop

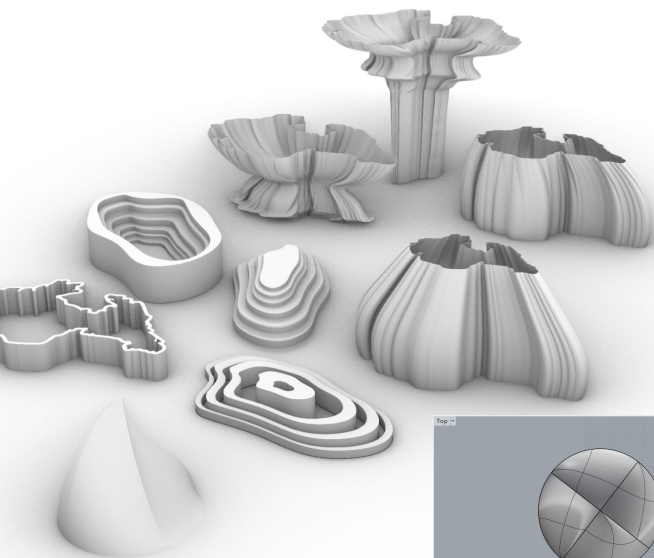
Academy of Arts and Design - Wrocław · La Cambre - Bruxelles · School of Media Arts and Design - Porto · ESAD - Orléans



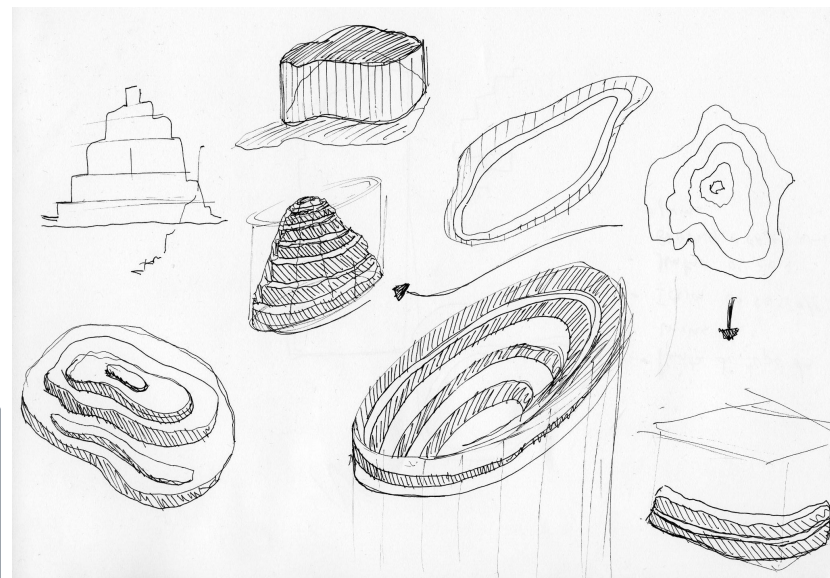
ceramic 3D printing

Blended Intensive Programme BIP - international workshop

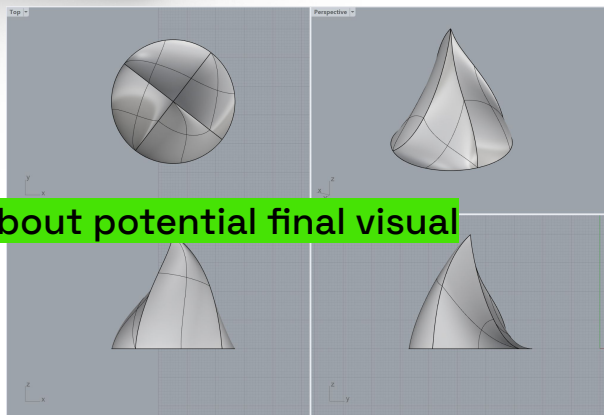
Academy of Arts and Design - Wrocław · La Cambre - Bruxelles · School of Media Arts and Design - Porto · ESAD - Orléans



Shapes inspired by open pit mines.



3D conceptions about potential final visual

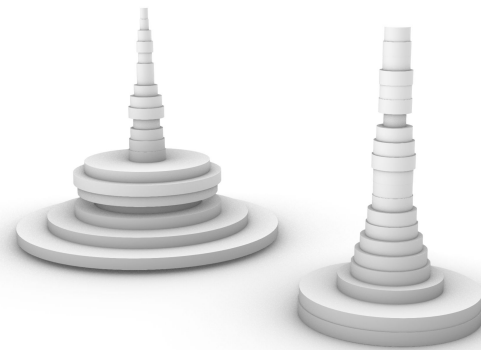
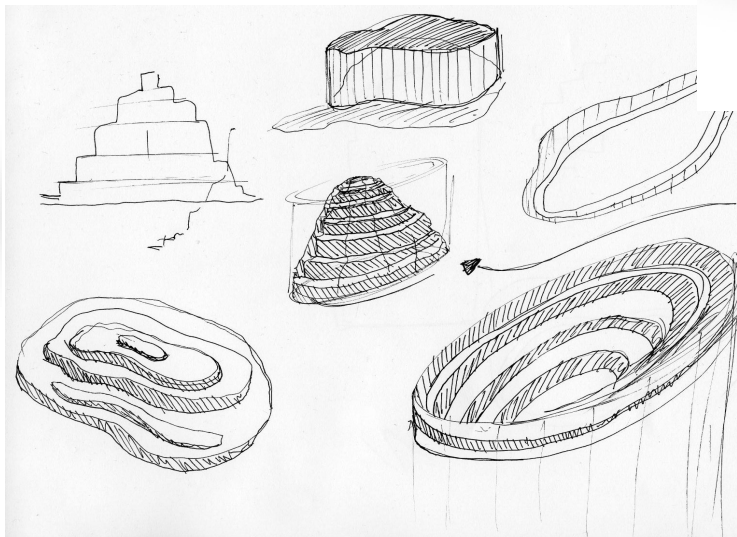
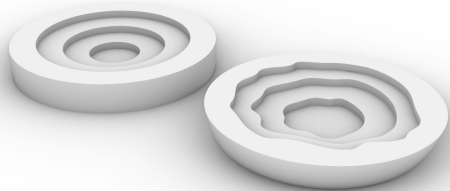


Shape from the datas “how many liters of water are needed to produce a ton of lithium carbonate” asked to different AI.

Blended Intensive Programme BIP - international workshop

Academy of Arts and Design - Wrocław · La Cambre - Bruxelles · School of Media Arts and Design - Porto · ESAD - Orléans

Chessboard inspired by the shape of open pit mines. The players will be forced to look inside to play in the middle of the chessboard.



Chess pieces inspired by data from world lithium production and water used.

Final visuals

Blended Intensive Programme BIP - international workshop

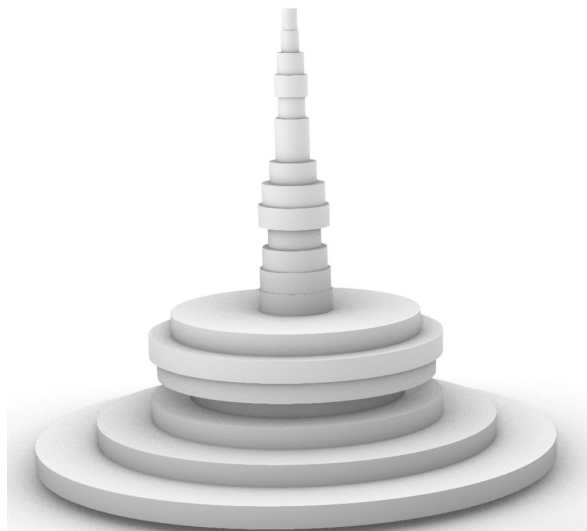
Academy of Arts and Design - Wrocław · La Cambre - Bruxelles · School of Media Arts and Design - Porto · ESAD - Orléans

3D printing



Chess pieces inspired by data from world lithium production and water used. Two side : data asked to AI and data from research with verifiable source of information.

PLA test



DECEMBER 16-20 2025

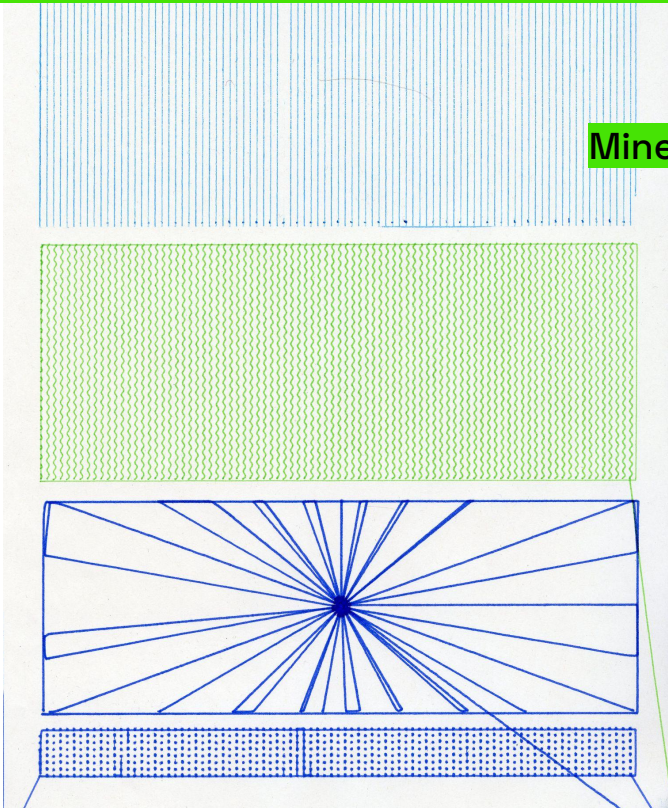
Blended Intensive Programme BIP - international workshop

Academy of Arts and Design - Wrocław · La Cambre - Bruxelles · School of Media Arts and Design - Porto · ESAD - Orléans



Blended Intensive Programme BIP - international workshop

Academy of Arts and Design - Wrocław · La Cambre - Bruxelles · School of Media Arts and Design - Porto · ESAD - Orléans



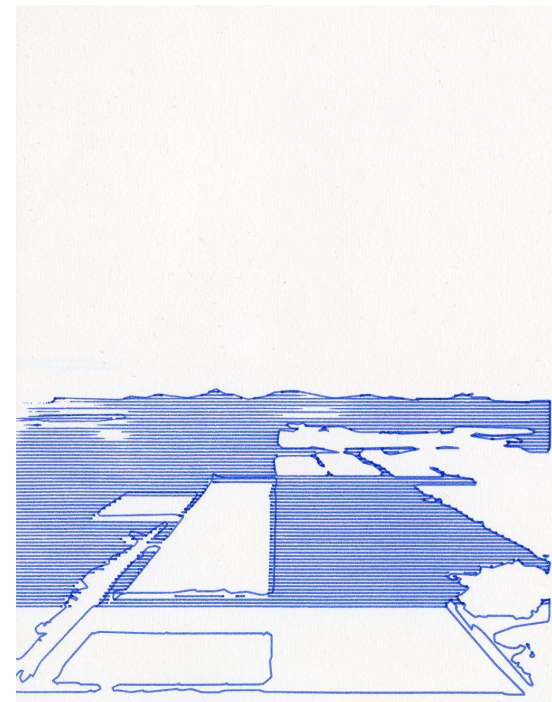
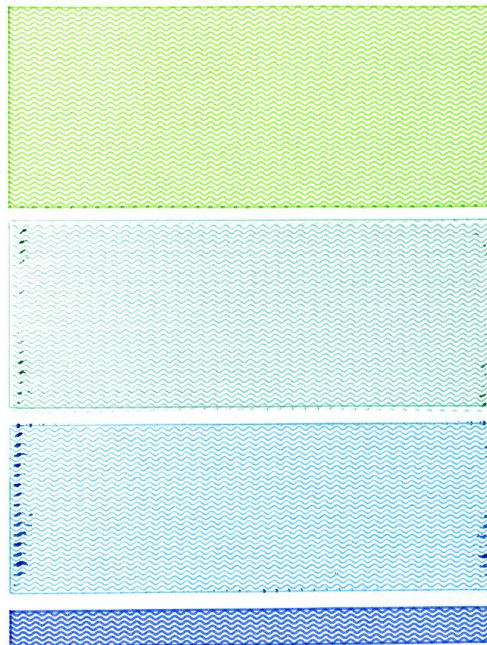
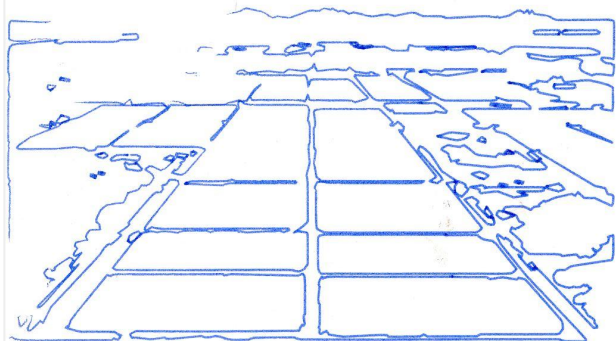
Mine site / Plotter translation



Blended Intensive Programme BIP - international workshop

Academy of Arts and Design - Wrocław · La Cambre - Bruxelles · School of Media Arts and Design - Porto · ESAD - Orléans

2 axis machine experiments



DECEMBER 16-20 2025

Blended Intensive Programme BIP - international workshop

Academy of Arts and Design - Wrocław · La Cambre - Bruxelles · School of Media Arts and Design - Porto · ESAD - Orléans

Vincent / La Cambre - Bruxelles

Julia / Academy of Arts and Design - Wrocław

Francisco / School of Media Arts and Design - Porto

Maxence - André / ESAD - Orléans

DECEMBER 16-20 2025

Blended Intensive Programme BIP - international workshop

Academy of Arts and Design - Wrocław · La Cambre - Bruxelles · School of Media Arts and Design - Porto · ESAD - Orléans



Blended Intensive Programme BIP - international workshop

Academy of Arts and Design - Wrocław · La Cambre - Bruxelles · School of Media Arts and Design - Porto · ESAD - Orléans

KEY WORDS

- Snowball
- Exponential Growth
- Unstable
- Unstoppable
- Destructable
- Dependence
- Dangerous
- Power
- Speed
- Pressure
- Balance
- Artistic

Important words to have in consideration
for the development of the
final product.

data we found interesting:

Global AI demand is expected to consume 4.2-6.6 billion cubic meters of water by 2027, surpassing Denmark's total annual water withdrawal of 4-6 billion cubic meters.--> Globally, AI-related infrastructure may soon consume six times more water than Denmark, a country of 6 million, according to one estimate. That is a problem when a quarter of humanity already lacks access to clean water and sanitation.

DECEMBER 16-20 2025

Blended Intensive Programme BIP - international workshop

Academy of Arts and Design - Wrocław · La Cambre - Bruxelles · School of Media Arts and Design - Porto · ESAD - Orléans



Blended Intensive Programme BIP - international workshop

Academy of Arts and Design - Wrocław · La Cambre - Bruxelles · School of Media Arts and Design - Porto · ESAD - Orléans

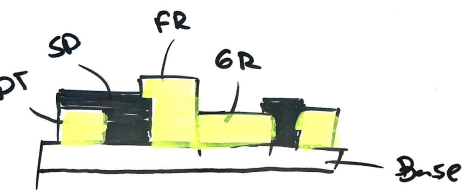
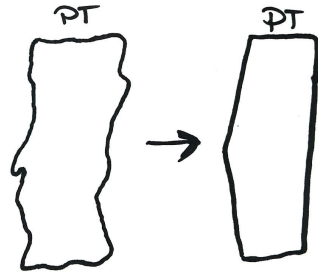
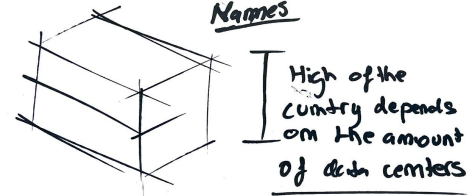
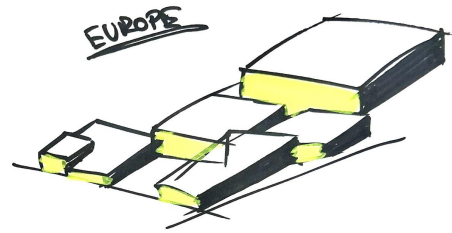
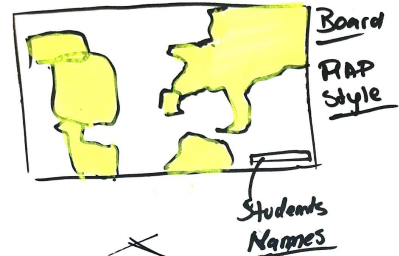
Data centre consumption for AI tasks will rise from 50 TWh (2023) to 554 TWh in 2030, representing an **11-fold increase in 7 years**.

Source:

<https://www.greenpeace.de/publikationen/20250514-greenpeace-studie-umweltauswirkungen-ki-eng.pdf>

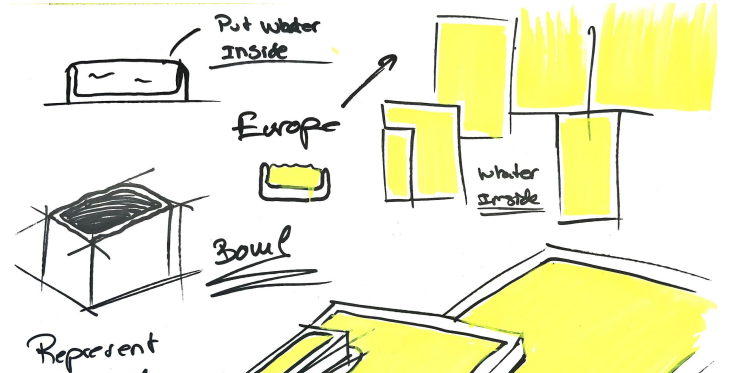
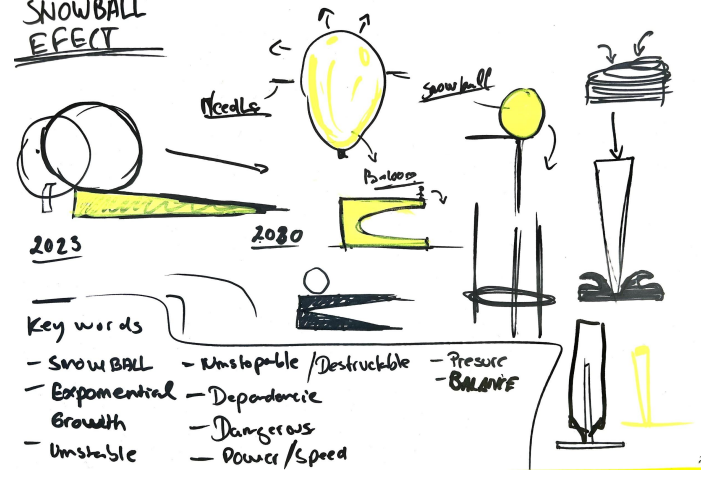
Blended Intensive Programme BIP - international workshop

Academy of Arts and Design - Wrocław · La Cambre - Bruxelles · School of Media Arts and Design - Porto · ESAD - Orléans



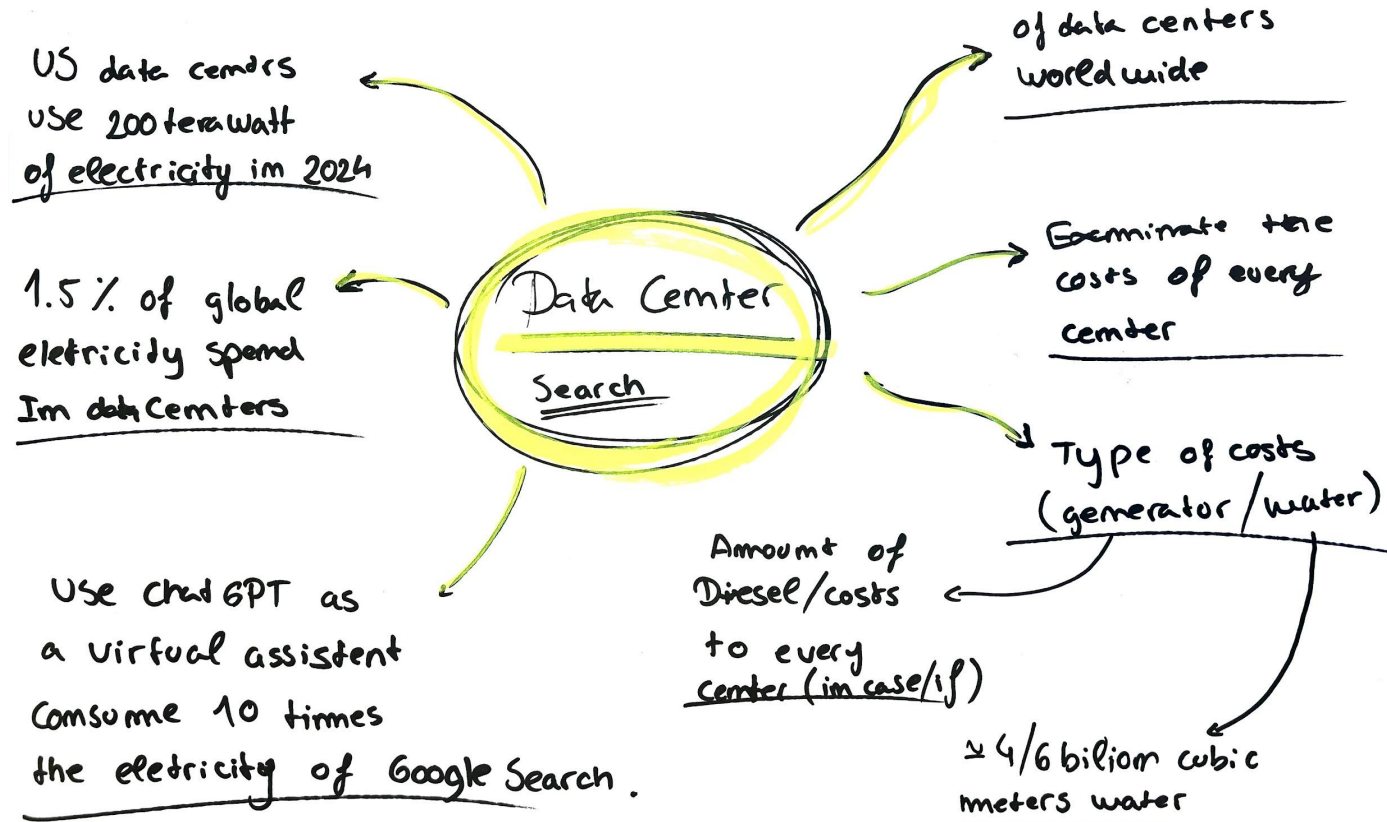
Simplify the Shapes of the Country's

SNOWBALL EFFECT



Blended Intensive Programme BIP - international workshop

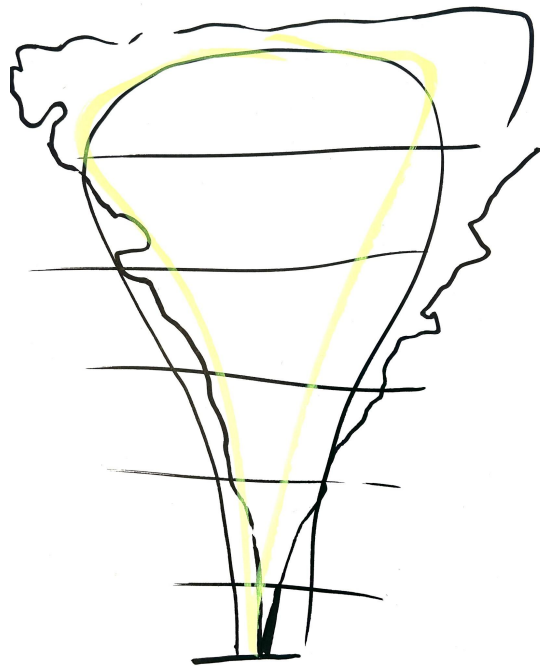
Academy of Arts and Design - Wrocław · La Cambre - Bruxelles · School of Media Arts and Design - Porto · ESAD - Orléans



DECEMBER 16-20 2025

Blended Intensive Programme BIP - international workshop

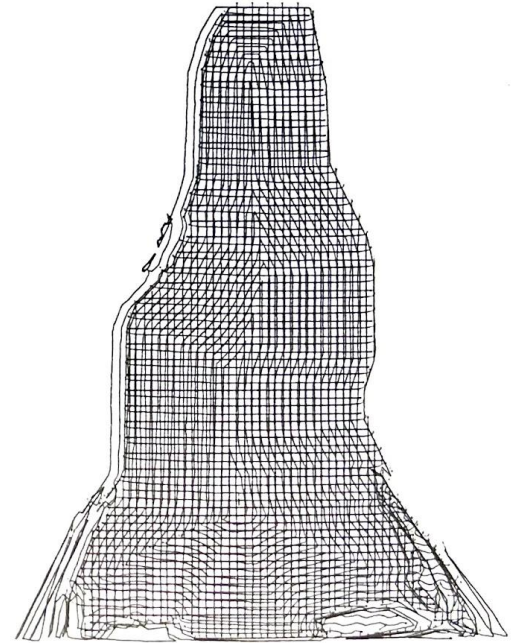
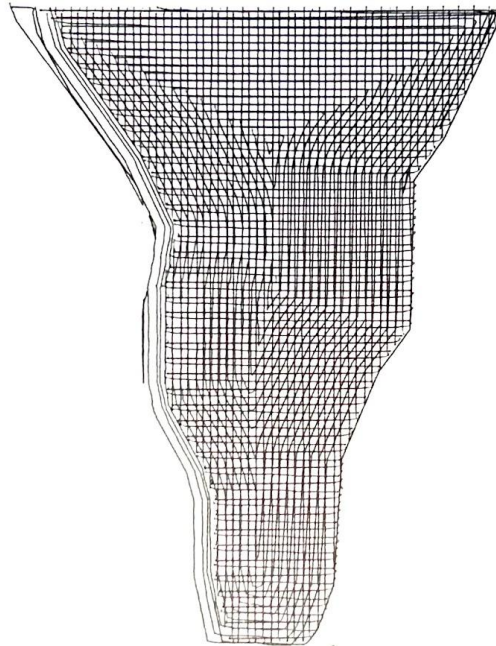
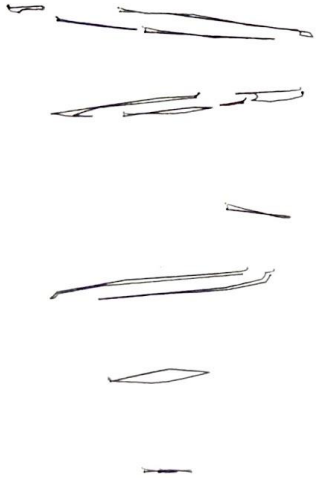
Academy of Arts and Design - Wrocław · La Cambre - Bruxelles · School of Media Arts and Design - Porto · ESAD - Orléans



Blended Intensive Programme BIP - international workshop

Academy of Arts and Design - Wrocław · La Cambre - Bruxelles · School of Media Arts and Design - Porto · ESAD - Orléans

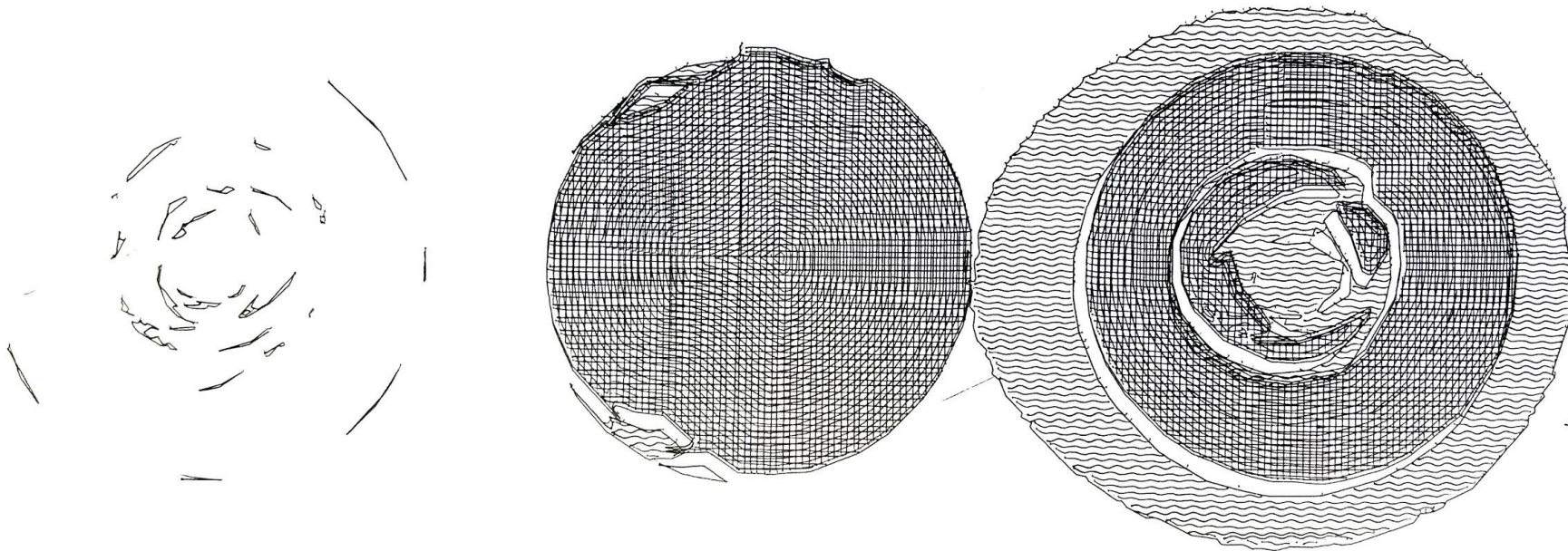
Plotter drawings of the side view of the models:



Blended Intensive Programme BIP - international workshop

Academy of Arts and Design - Wrocław · La Cambre - Bruxelles · School of Media Arts and Design - Porto · ESAD - Orléans

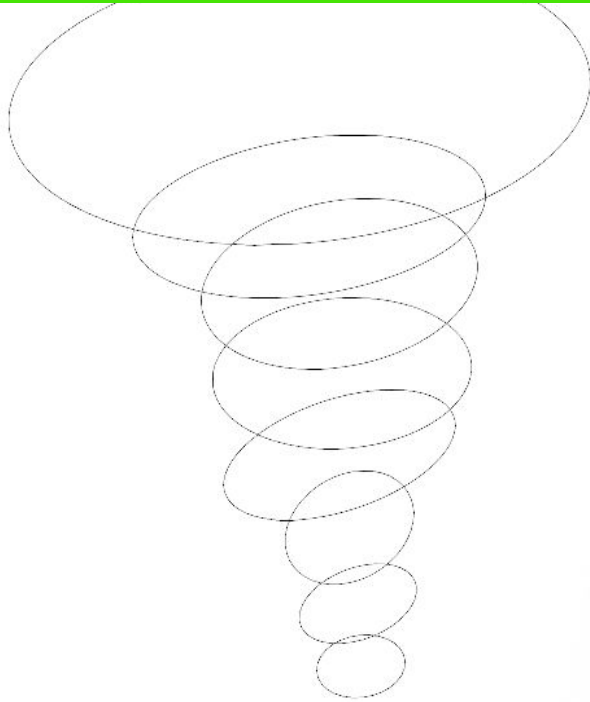
Plotter drawings of the top view of the models :



DECEMBER 16-20 2025

Blended Intensive Programme BIP - international workshop

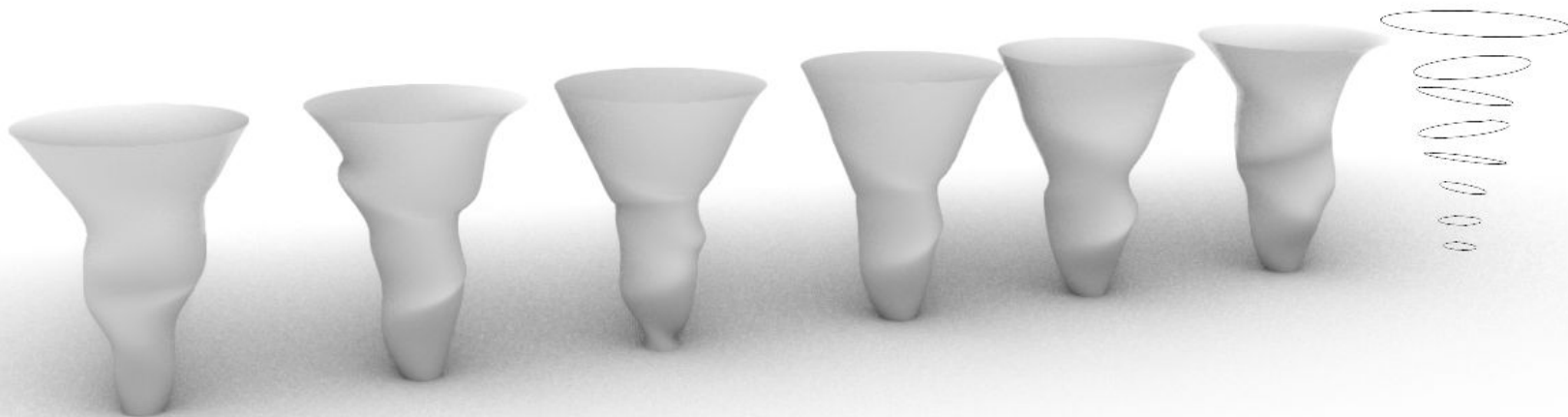
Academy of Arts and Design - Wrocław · La Cambre - Bruxelles · School of Media Arts and Design - Porto · ESAD - Orléans



The models are composed of 7 phases - the first one is 1 cm, the last one 11 cm representing the 11-fold growth of the usage of energy by AI in 7 years. The form is 14 cm tall.

Blended Intensive Programme BIP - international workshop

Academy of Arts and Design - Wrocław · La Cambre - Bruxelles · School of Media Arts and Design - Porto · ESAD - Orléans



Models

DECEMBER 16-20 2025

Blended Intensive Programme BIP - international workshop

Academy of Arts and Design - Wrocław · La Cambre - Bruxelles · School of Media Arts and Design - Porto · ESAD - Orléans



Sketch prints : 4 small scale (50 mm x 2,5 mm)

Real size : 100 / 150 mm x 50 mm

DECEMBER 16-20 2025

Blended Intensive Programme BIP - international workshop

Academy of Arts and Design - Wrocław · La Cambre - Bruxelles · School of Media Arts and Design - Porto · ESAD - Orléans

Deborah / La Cambre - Bruxelles

Barbara / Academy of Arts and Design - Wrocław

Hugo / School of Media Arts and Design - Porto

Simon, Antoine, Gabriel / ESAD - Orléans

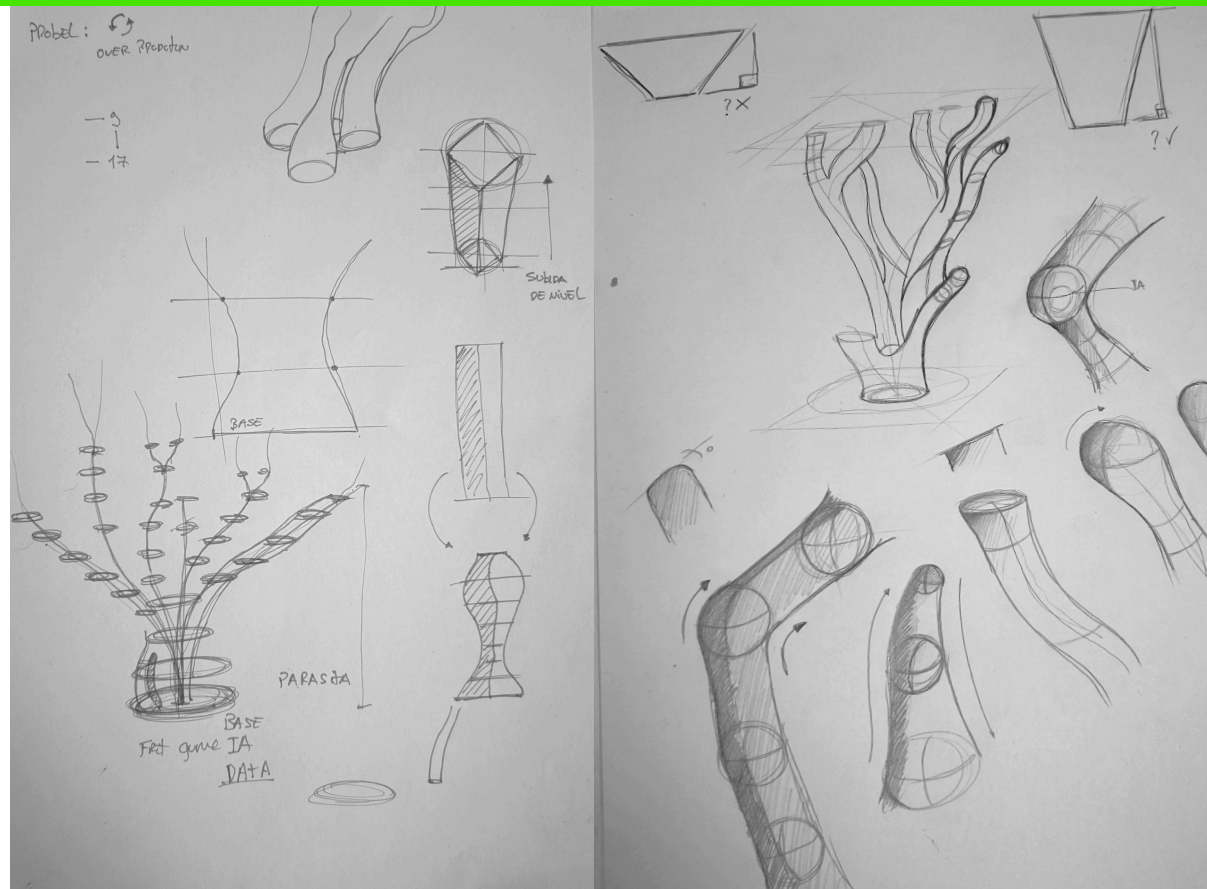
Blended Intensive Programme BIP - international workshop

Academy of Arts and Design - Wrocław · La Cambre - Bruxelles · School of Media Arts and Design - Porto · ESAD - Orléans



Blended Intensive Programme BIP - international workshop

Academy of Arts and Design - Wrocław · La Cambre - Bruxelles · School of Media Arts and Design - Porto · ESAD - Orléans



DECEMBER 16-20 2025

Blended Intensive Programme BIP - international workshop

Academy of Arts and Design - Wrocław · La Cambre - Bruxelles · School of Media Arts and Design - Porto · ESAD - Orléans



CERAMICS

DECEMBER 16-20 2025

Blended Intensive Programme BIP - international workshop

Academy of Arts and Design - Wrocław · La Cambre - Bruxelles · School of Media Arts and Design - Porto · ESAD - Orléans



CERAMICS

DECEMBER 16-20 2025

Blended Intensive Programme BIP - international workshop

Academy of Arts and Design - Wrocław · La Cambre - Bruxelles · School of Media Arts and Design - Porto · ESAD - Orléans



CERAMICS

DECEMBER 16-20 2025

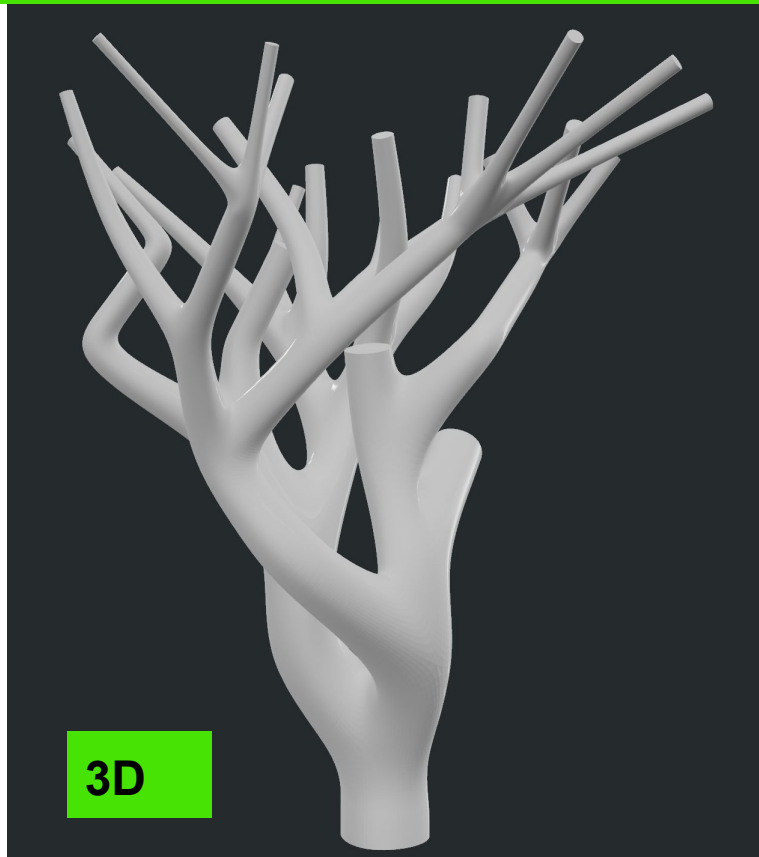
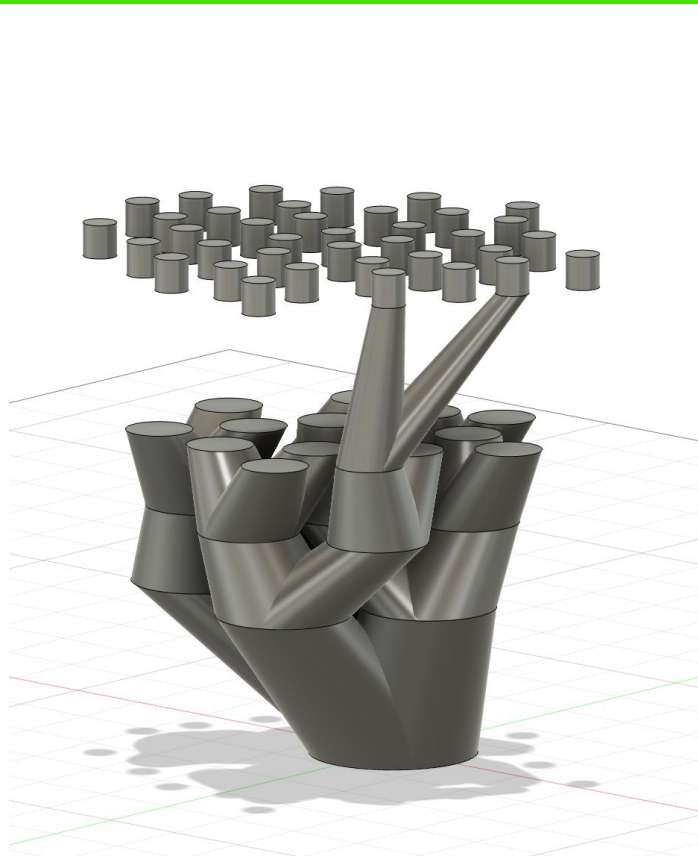
Blended Intensive Programme BIP - international workshop

Academy of Arts and Design - Wrocław · La Cambre - Bruxelles · School of Media Arts and Design - Porto · ESAD - Orléans



Blended Intensive Programme BIP - international workshop

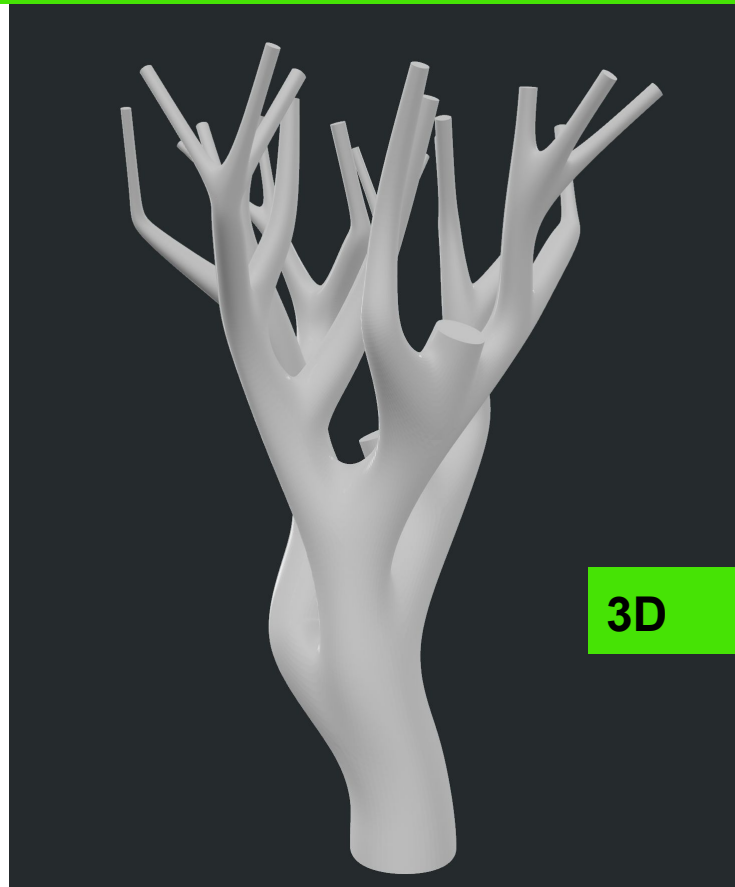
Academy of Arts and Design - Wrocław · La Cambre - Bruxelles · School of Media Arts and Design - Porto · ESAD - Orléans



3D

Blended Intensive Programme BIP - international workshop

Academy of Arts and Design - Wrocław · La Cambre - Bruxelles · School of Media Arts and Design - Porto · ESAD - Orléans



Blended Intensive Programme BIP - international workshop

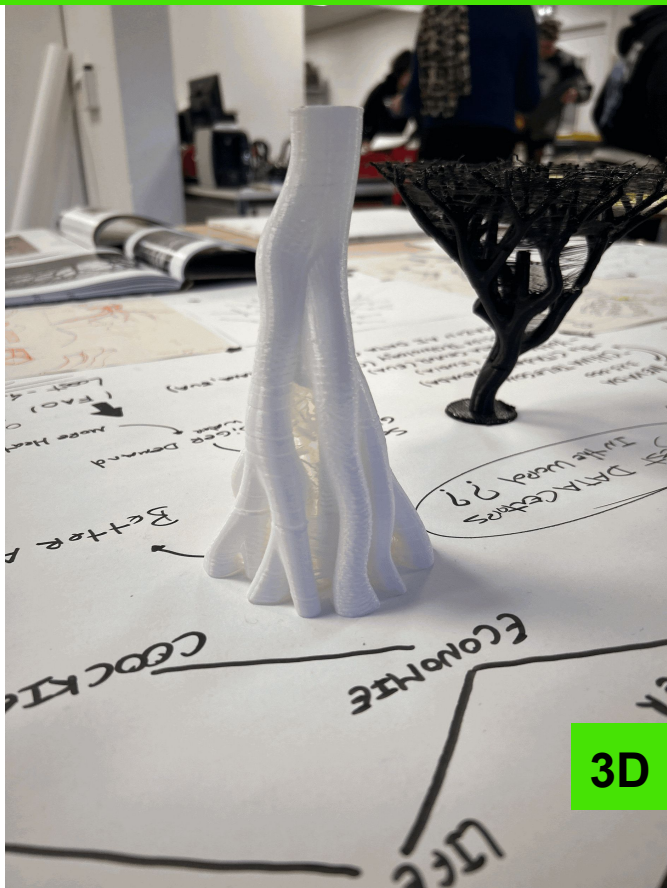
Academy of Arts and Design - Wrocław · La Cambre - Bruxelles · School of Media Arts and Design - Porto · ESAD - Orléans



3D

Blended Intensive Programme BIP - international workshop

Academy of Arts and Design - Wrocław · La Cambre - Bruxelles · School of Media Arts and Design - Porto · ESAD - Orléans



3D

DECEMBER 16-20 2025

Blended Intensive Programme BIP - international workshop

Academy of Arts and Design - Wrocław · La Cambre - Bruxelles · School of Media Arts and Design - Porto · ESAD - Orléans

Lorraine Peiry / La Cambre - Bruxelles

Wiktoria Oleksy / Academy of Arts and Design - Wrocław

Vasco Santos / School of Media Arts and Design - Porto

Marine Isnard, Emilie Retailleau, Julika Hother / ESAD - Orléans

DECEMBER 16-20 2025

Blended Intensive Programme BIP - international workshop

Academy of Arts and Design - Wrocław · La Cambre - Bruxelles · School of Media Arts and Design - Porto · ESAD - Orléans

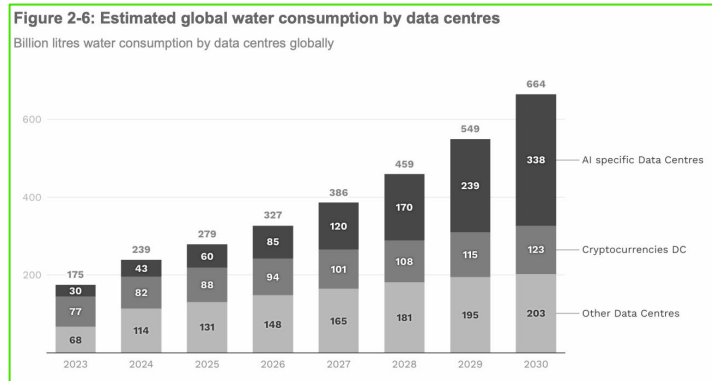


Blended Intensive Programme BIP - international workshop

Academy of Arts and Design - Wrocław · La Cambre - Bruxelles · School of Media Arts and Design - Porto · ESAD - Orléans

The screenshot shows the Eurostat Data Browser interface. At the top, there is the Eurostat logo, a search bar with the text 'Enter search term', and navigation options for 'Log in' and 'EN'. Below the search bar, the page title is 'Data Browser'. A navigation menu includes 'Database', 'Recently updated', 'Bulk download', 'Info', and 'Help'. The main content area shows a breadcrumb trail: 'Home > Database > Environment and energy > Environment > Water > Water statistics on national level'. The primary title is 'Water use by supply category and economical sector'. To the right of this title are three icons: a document icon for 'Metadata', an information icon for 'Dataset information', and a plus icon for 'Add to My datasets'. Below the title, there is a line of text: 'Online data code: env_wat_cat | DOI: 10.2908/env_wat_cat | last update: 31/07/2025 23:00 | view: DEFAULT'. At the bottom left, it says 'Source of data: Eurostat'.

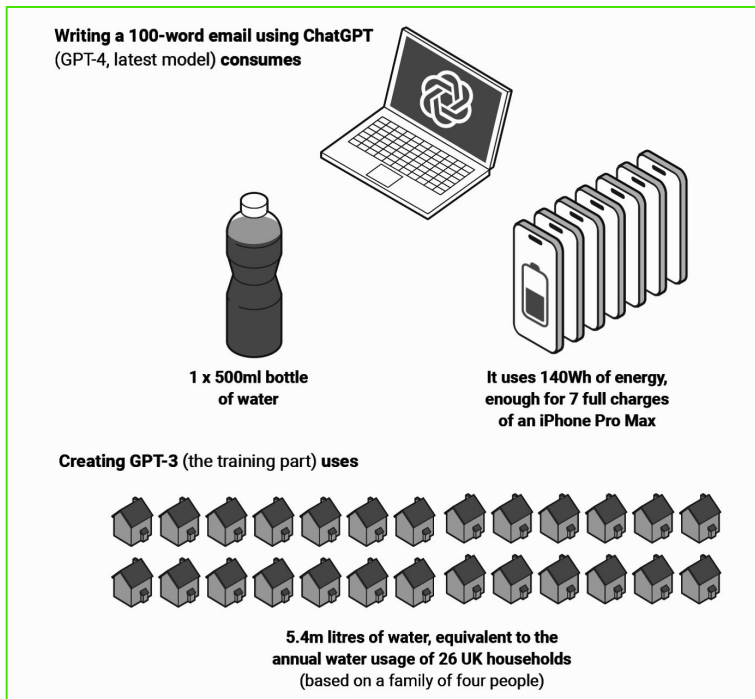
European Data consumption of water



AI is thirsty

Blended Intensive Programme BIP - international workshop

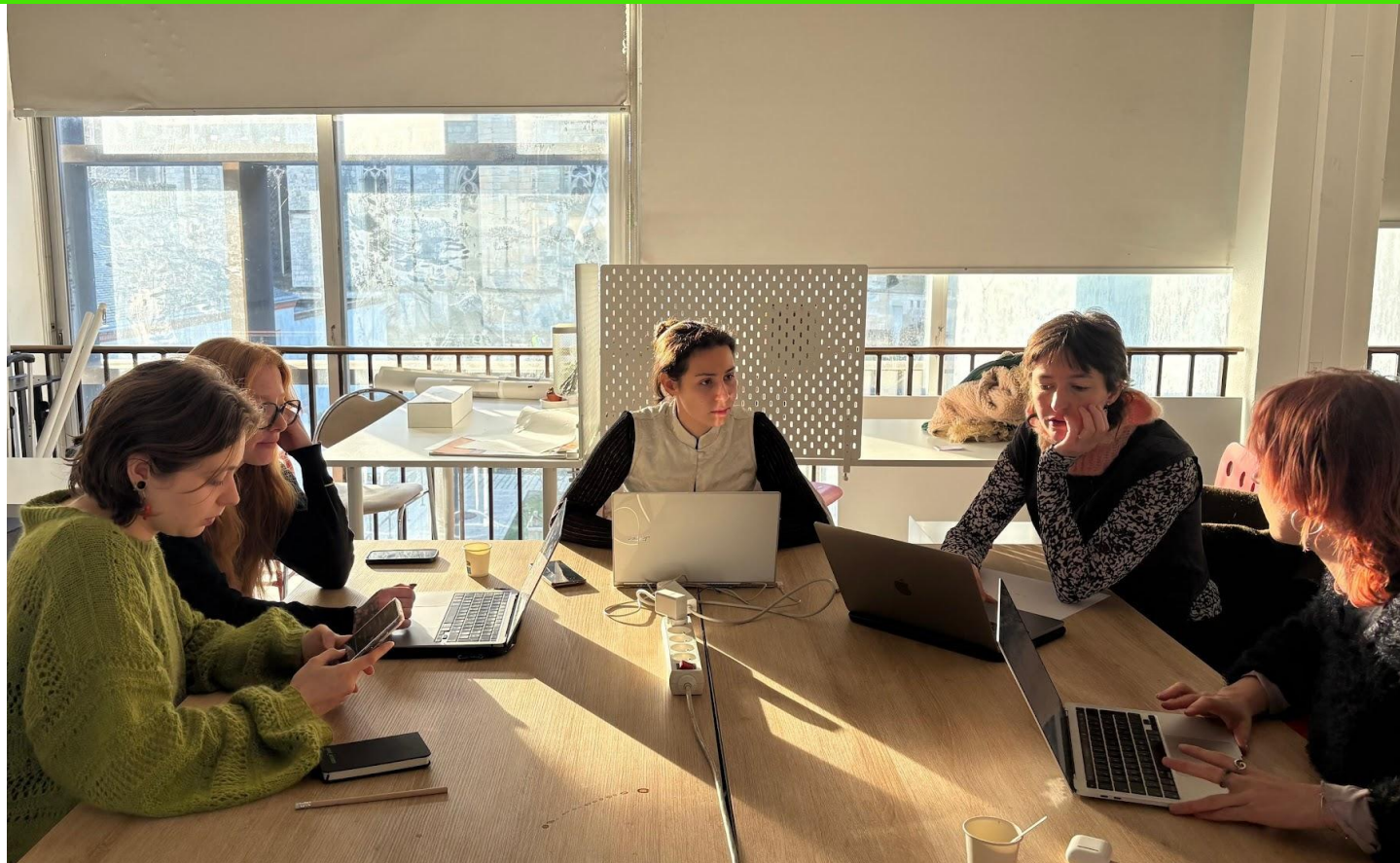
Academy of Arts and Design - Wrocław · La Cambre - Bruxelles · School of Media Arts and Design - Porto · ESAD - Orléans



DECEMBER 16-20 2025

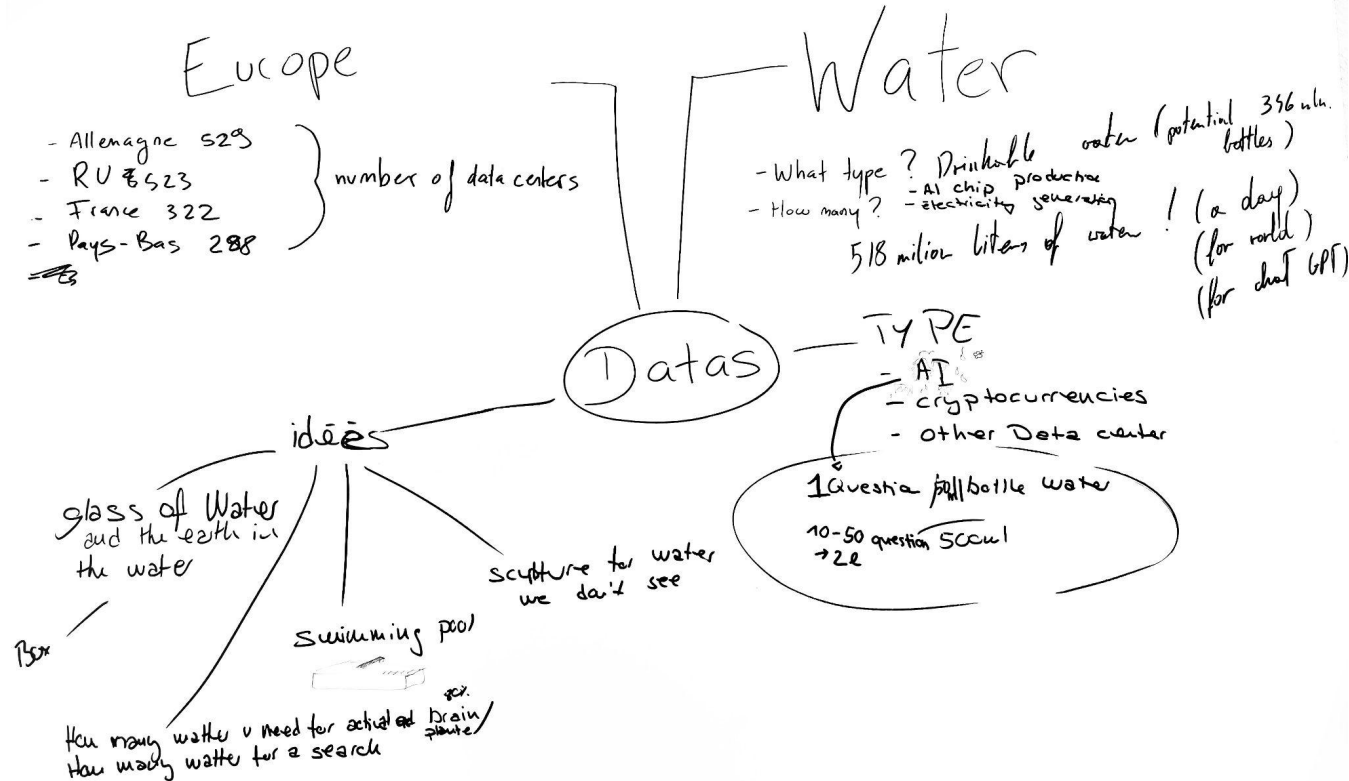
Blended Intensive Programme BIP - international workshop

Academy of Arts and Design - Wrocław · La Cambre - Bruxelles · School of Media Arts and Design - Porto · ESAD - Orléans



Blended Intensive Programme BIP - international workshop

Academy of Arts and Design - Wrocław · La Cambre - Bruxelles · School of Media Arts and Design - Porto · ESAD - Orléans



DECEMBER 16-20 2025

Blended Intensive Programme BIP - international workshop

Academy of Arts and Design - Wrocław · La Cambre - Bruxelles · School of Media Arts and Design - Porto · ESAD - Orléans



DECEMBER 16-20 2025

Blended Intensive Programme BIP - international workshop

Academy of Arts and Design - Wrocław · La Cambre - Bruxelles · School of Media Arts and Design - Porto · ESAD - Orléans



DECEMBER 16-20 2025

Blended Intensive Programme BIP - international workshop

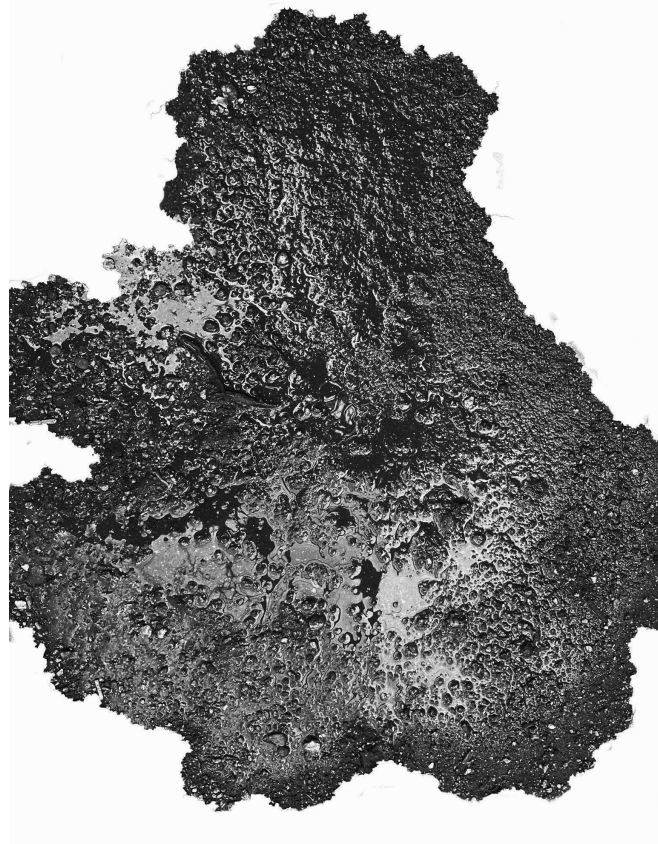
Academy of Arts and Design - Wrocław · La Cambre - Bruxelles · School of Media Arts and Design - Porto · ESAD - Orléans



DECEMBER 16-20 2025

Blended Intensive Programme BIP - international workshop

Academy of Arts and Design - Wrocław · La Cambre - Bruxelles · School of Media Arts and Design - Porto · ESAD - Orléans



DECEMBER 16-20 2025

Blended Intensive Programme BIP - international workshop

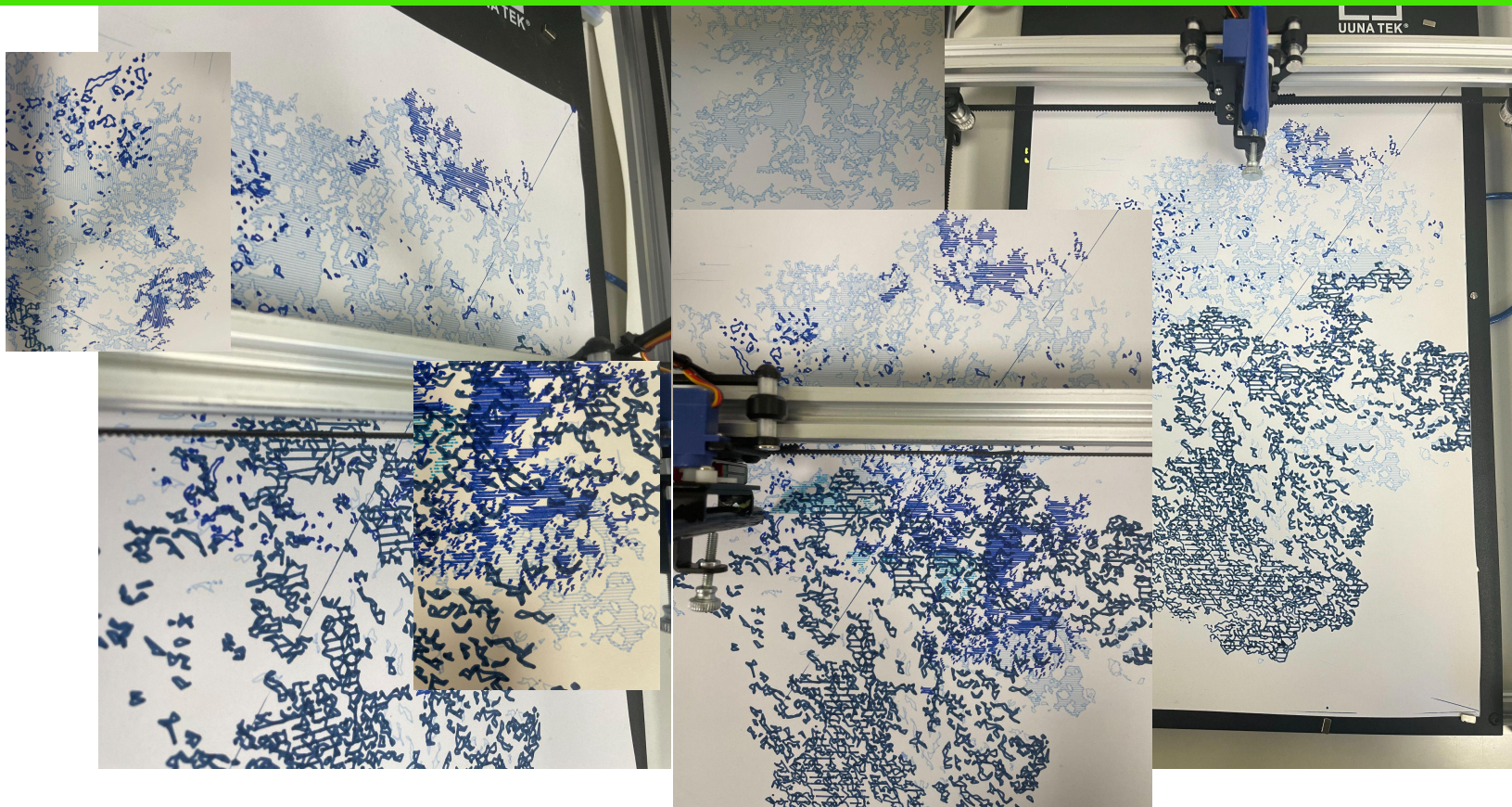
Academy of Arts and Design - Wrocław · La Cambre - Bruxelles · School of Media Arts and Design - Porto · ESAD - Orléans



DECEMBER 16-20 2025

Blended Intensive Programme BIP - international workshop

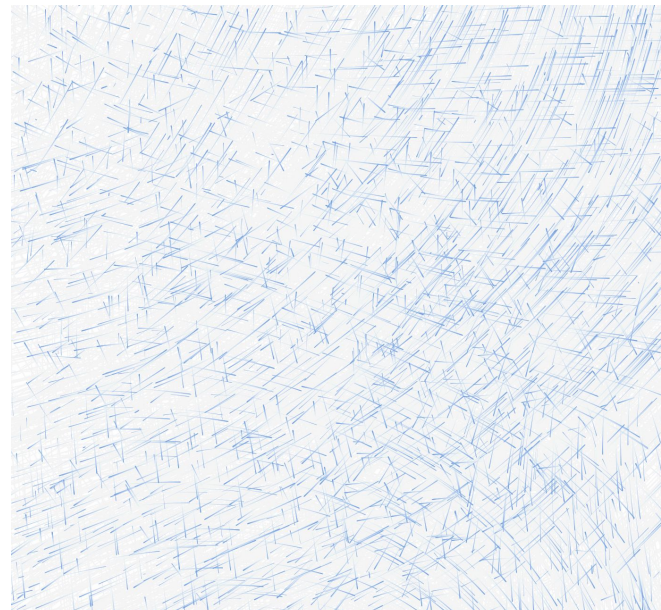
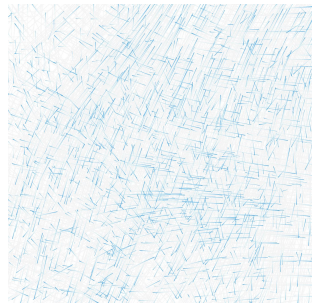
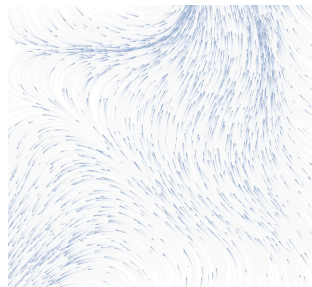
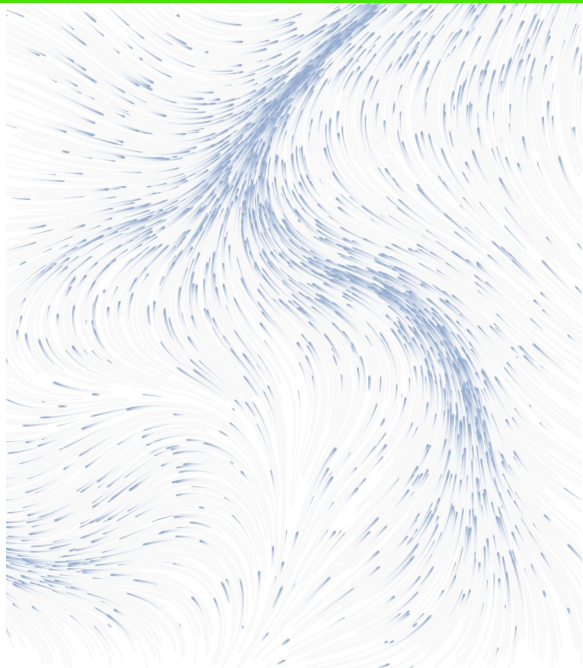
Academy of Arts and Design - Wrocław · La Cambre - Bruxelles · School of Media Arts and Design - Porto · ESAD - Orléans



DECEMBER 16-20 2025

Blended Intensive Programme BIP - international workshop

Academy of Arts and Design - Wrocław · La Cambre - Bruxelles · School of Media Arts and Design - Porto · ESAD - Orléans

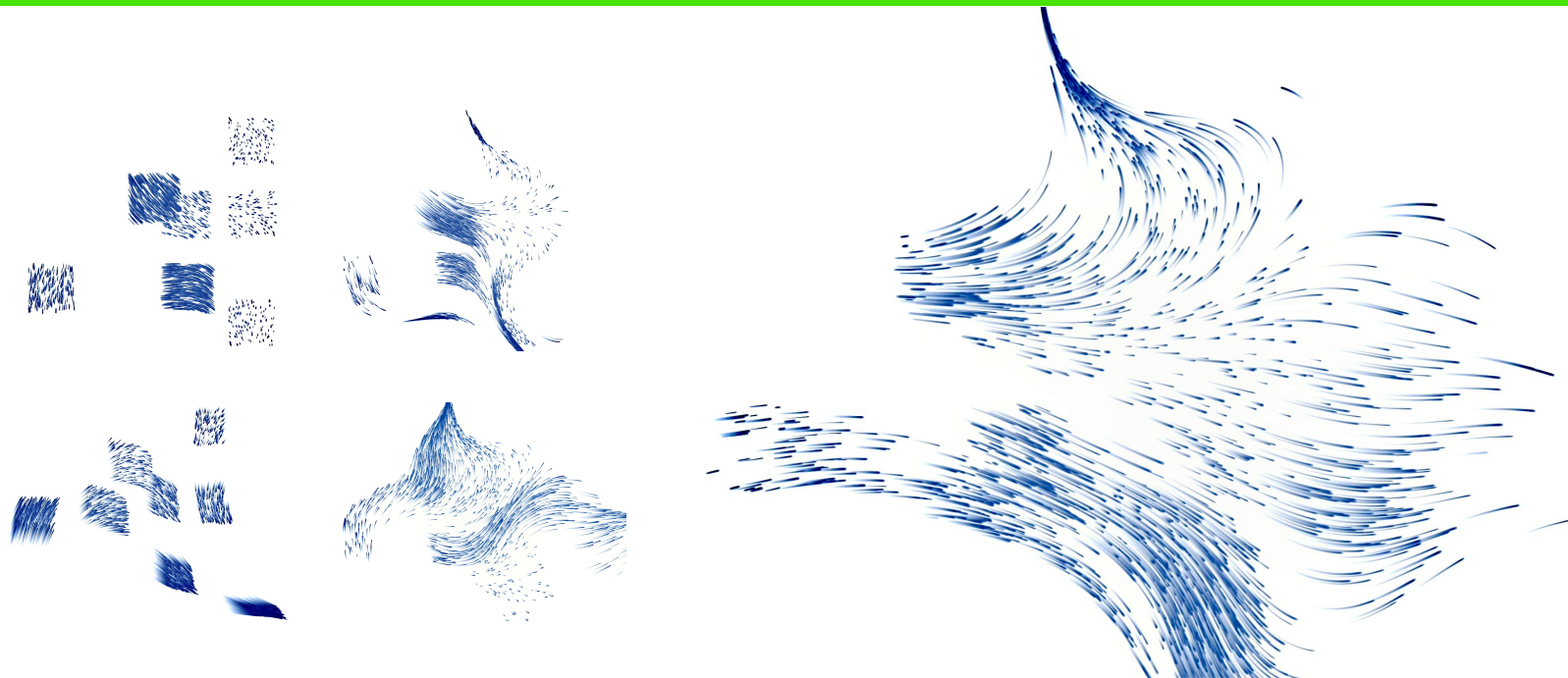


Creative coding made with P5 . js - Tests and on density of lignes and data flow

DECEMBER 16-20 2025

Blended Intensive Programme BIP - international workshop

Academy of Arts and Design - Wrocław · La Cambre - Bruxelles · School of Media Arts and Design - Porto · ESAD - Orléans

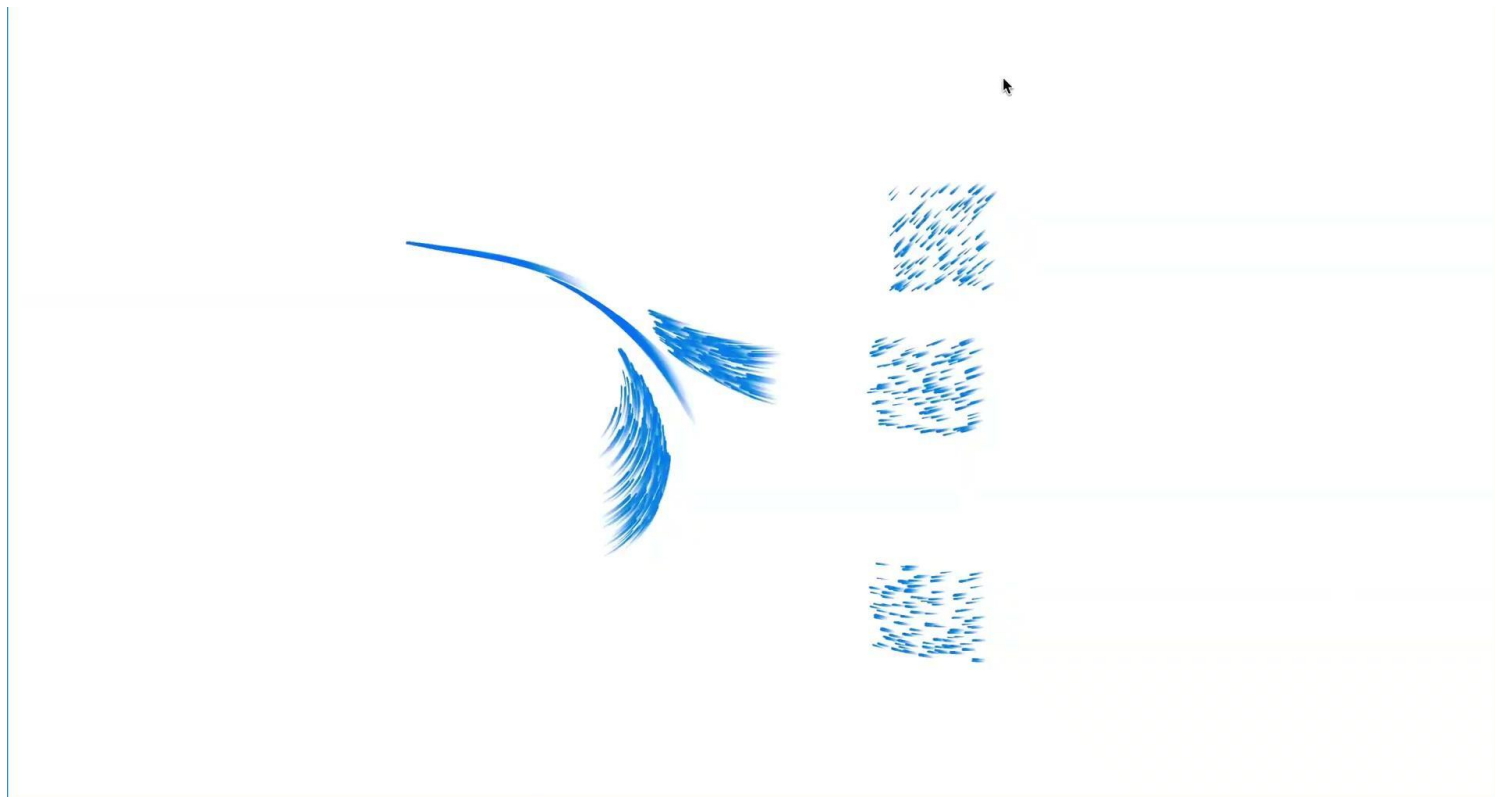


Creative coding made with P5 . js

The flow and density of each lines are link to real data of the consumption of water in different country of Europe

Blended Intensive Programme BIP - international workshop

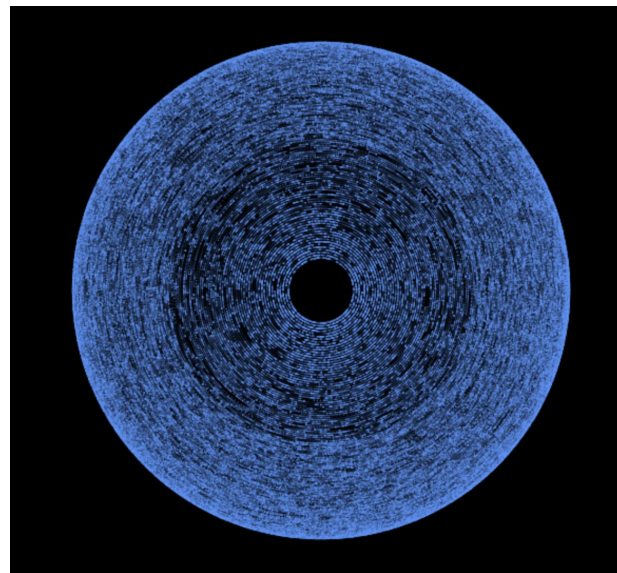
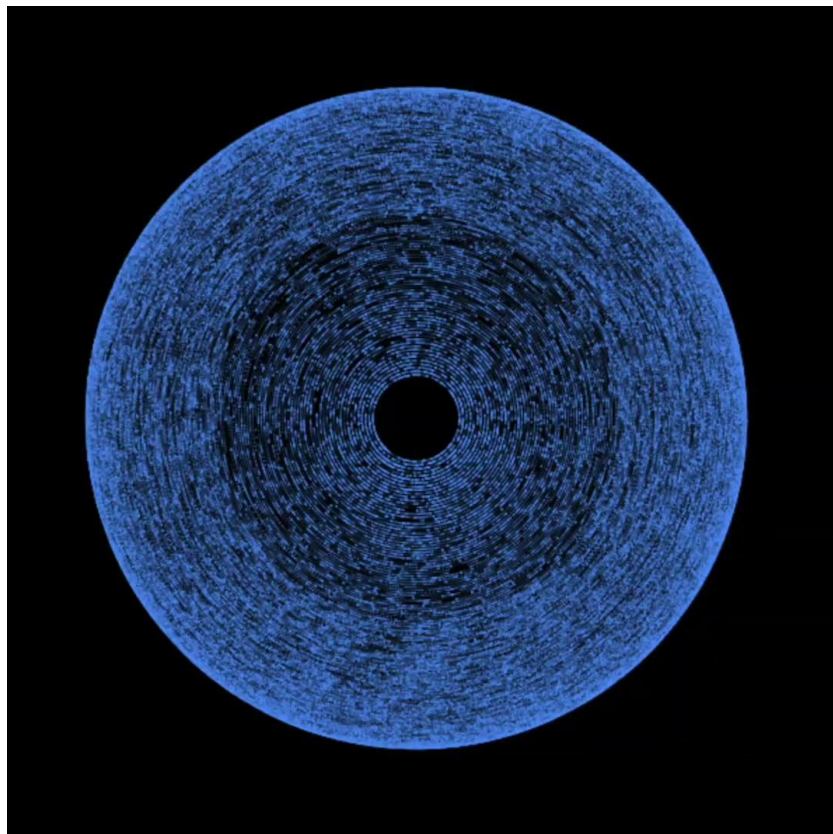
Academy of Arts and Design - Wrocław · La Cambre - Bruxelles · School of Media Arts and Design - Porto · ESAD - Orléans



DECEMBER 16-20 2025

Blended Intensive Programme BIP - international workshop

Academy of Arts and Design - Wrocław · La Cambre - Bruxelles · School of Media Arts and Design - Porto · ESAD - Orléans



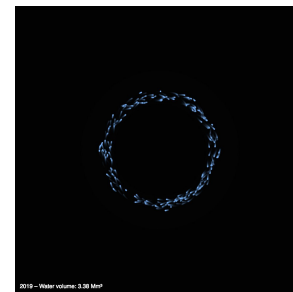
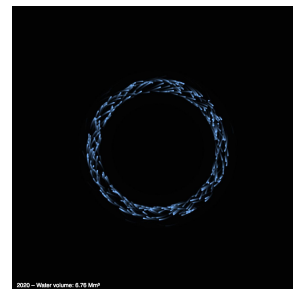
Creative coding made with P5 . js
Test with particles system

Blended Intensive Programme BIP - international workshop

Academy of Arts and Design - Wrocław · La Cambre - Bruxelles · School of Media Arts and Design - Porto · ESAD - Orléans



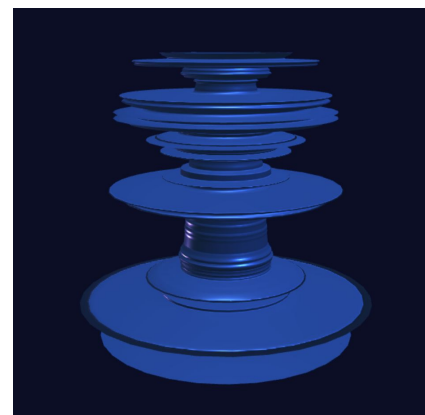
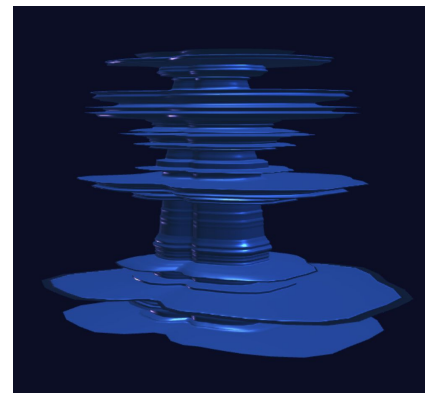
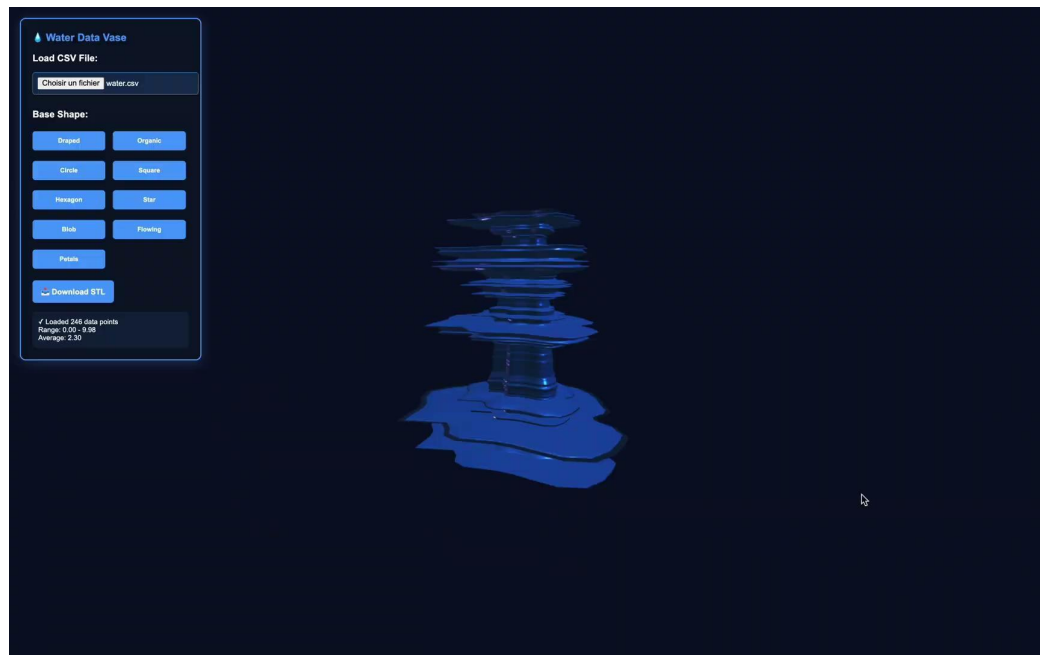
sketch pr



Creative coding made with P5.js
The flow and density of each lines are link to real data of the consumption of water in different country of Europe

Blended Intensive Programme BIP - international workshop

Academy of Arts and Design - Wrocław · La Cambre - Bruxelles · School of Media Arts and Design - Porto · ESAD - Orléans



Creation of a 3D data visualization program, each level is link to the variation of the consumption of the wate, It is possible to change the base shape.

DECEMBER 16-20 2025

Blended Intensive Programme BIP - international workshop

Academy of Arts and Design - Wrocław · La Cambre - Bruxelles · School of Media Arts and Design - Porto · ESAD - Orléans



DECEMBER 16-20 2025

Blended Intensive Programme BIP - international workshop

Academy of Arts and Design - Wrocław · La Cambre - Bruxelles · School of Media Arts and Design - Porto · ESAD - Orléans

